

Domintell GoldenGate for DGQG01

Configuration software for Domintell2 system

v1.46.0

Loading interface (1.2.0 - f0352a89)...



Table of Contents

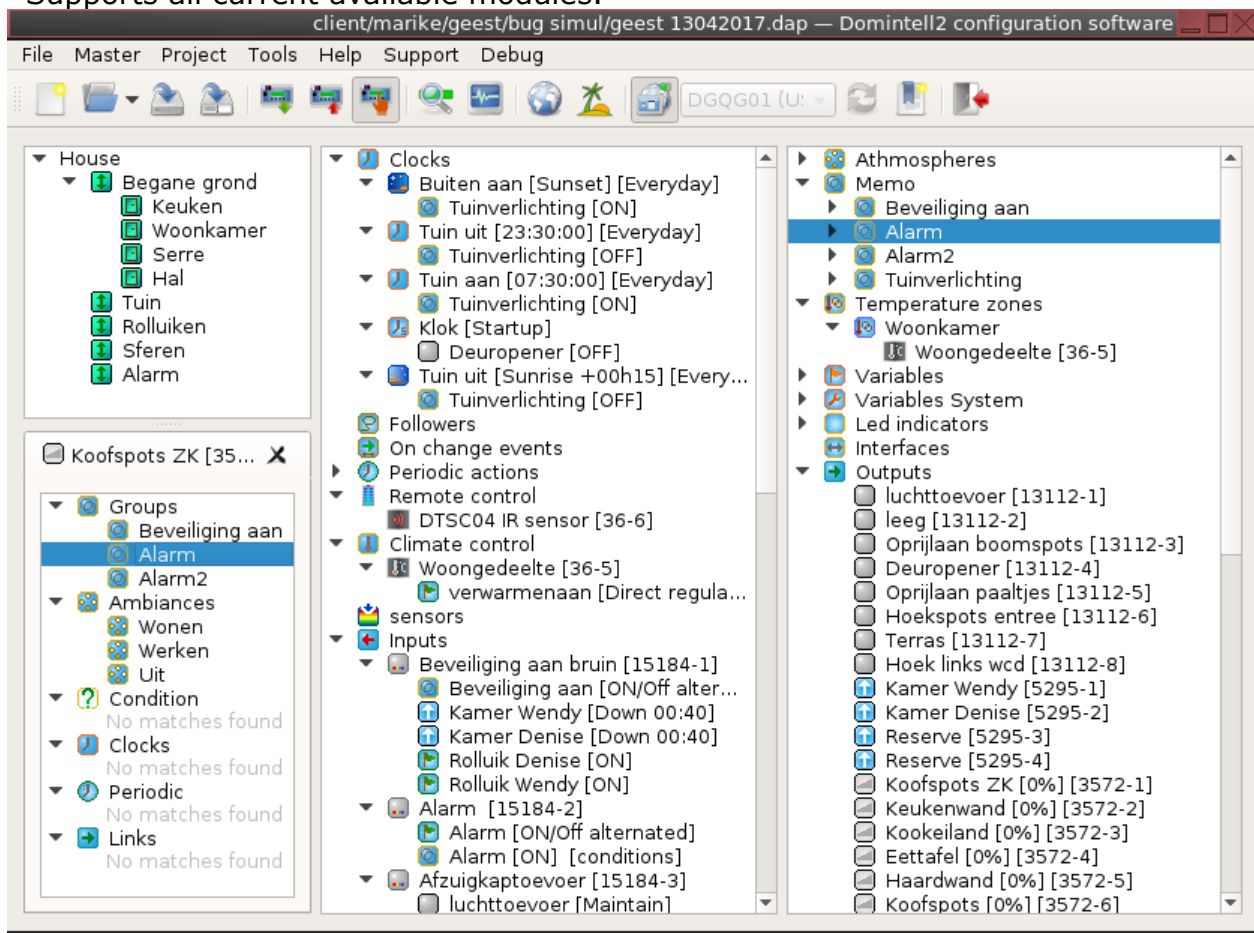
| | |
|-------------------------------|----|
| Introduction..... | 3 |
| New features..... | 3 |
| Shortcuts..... | 8 |
| Limitations/Known issues..... | 9 |
| Report bugs..... | 9 |
| What must be tested..... | 9 |
| Changelog..... | 10 |

Illustration Index

| | |
|---|---|
| Illustration 1: Main toolbar when not connected to the Master/DGQG..... | 3 |
| Illustration 2: Main toolbar when conncted to the Master/DGQG and "PC active" mode enabled..... | 3 |
| Illustration 3: New search window..... | 4 |
| Illustration 4: Special context menu on multiple selection..... | 4 |
| Illustration 5: Diagnostic and firmware winodw..... | 5 |
| Illustration 6: Restore on power failure and simulation..... | 6 |
| Illustration 7: Transform dialog..... | 7 |
| Illustration 8: Simulation log window..... | 7 |
| Illustration 9: Temperature log window..... | 8 |

Introduction

- Brand new software, modern, up-to-date and from a technology point of view ready for the next 15 years to come.
- Facilitates fast and swift integration of new modules and new features
- BUT ensures a similar look and feel compared to the first generation software —> no learning curve needed!
- Supports all current available modules.



New features

- **If the database of images was generated with a version earlier to 1.13.0, the database SHOULD be regenerated (See support menu) !**
- **Version 1.x (and later) of GoldenGate is no more compatible with DGQG02/03/04. Please use version 3.x of GoldenGate to use it with a New Generation DGQG (DGQG02/DGQG03/DGQG04) !**
- The user interface has a better intergration with the operating system (same look-and-feel).
- Menus have been reviewed and simplified.
- A toolbar has been added with the main functions.



Illustration 1: Main toolbar when not connected to the Master/DGQG

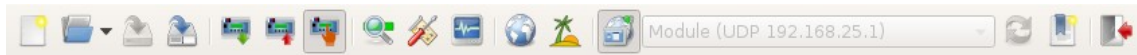


Illustration 2: Main toolbar when conncted to the Master/DGQG and "PC active" mode enabled

- Keyboard shortcut has been implemented. You can send us yours for a future implementation. See Shortcuts paragraph
- Search dialog is now intergrated to main window and several search can be executed via a tab system.

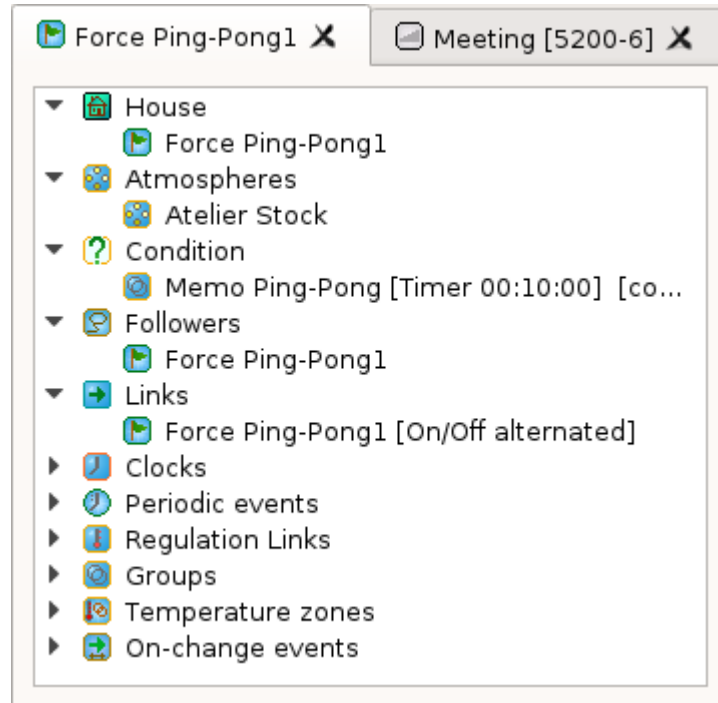


Illustration 3: New search window

- It is possible change the order of links inside a node using a drag-and-drop.
- When several items are selected, a right-click open a special context menu to create a group with selected items. This only works with items selected within "Outputs", "LED indicators" and "Interfaces" nodes.

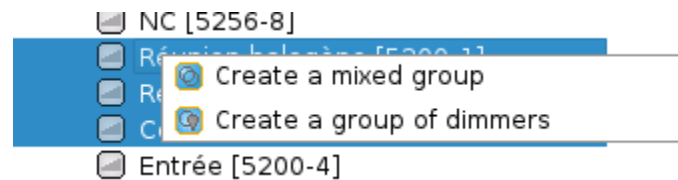


Illustration 4: Special context menu on multiple selection

- In PC active mode, CTRL (or CMD on Mac OS) key must be kept pressed while clicking on an input/output to execute action.
- In PC active mode, long-push are now handled on input to fully simulate start of short push, end of short push, start of long push and end of long push on inputs.
- How-to dialog box are available via Help menu.

- All updates (DGQG, firmware of modules via bus or Ethernet) are now done within the same dialog.

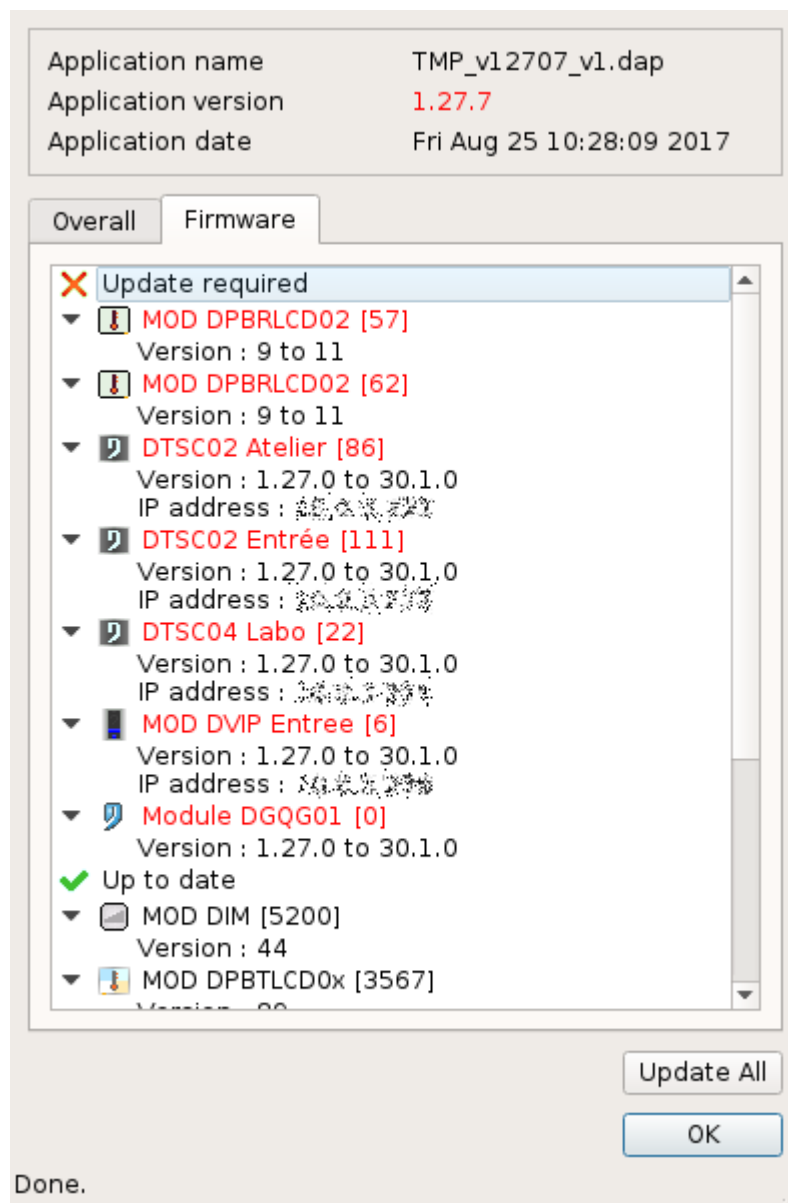


Illustration 5: Diagnostic and firmware window

- Configuration of "Restore on power failure" and "Presence simulation" have been merged in one dialog.

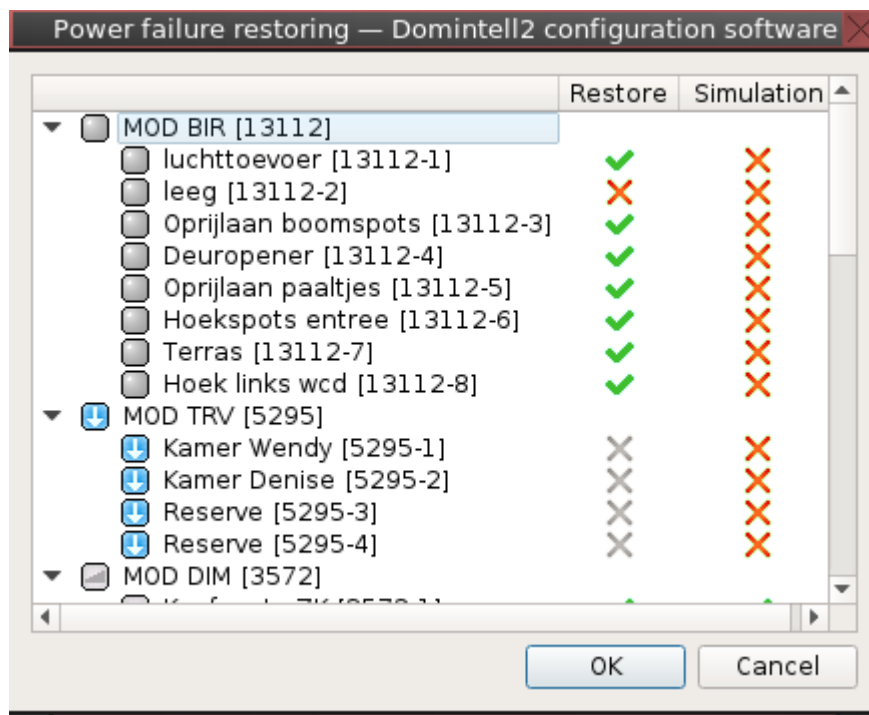


Illustration 6: Restore on power failure and simulation

- It is possible to exchange a module with an other compatible module (with different type of module). For example, you can transform :
 - two DISM08 and on DISM04 into a DISM20;
 - one DTSC04 by a DTSC02 (or vice-versa)
 - a DBIR01 into a DMR01 (or vice-verse)

In the example below, a group of two DMR01 and two DBIR01 will be merge and moved to an unused DBIR01. As only 5 IOs are used for these four modules, all unused Ios are ignored. This allows moving these 5 Ios from four different modules to a single DBIR01.

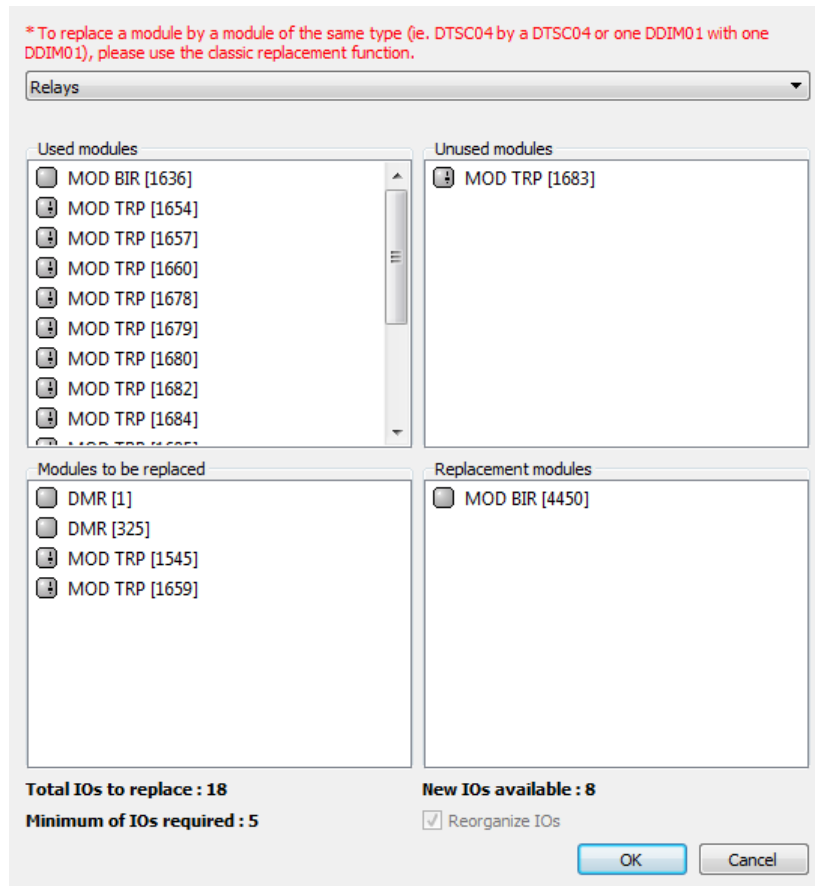


Illustration 7: Transform dialog

- Simulation log viewer has been reviewed and simulation data can be saved.

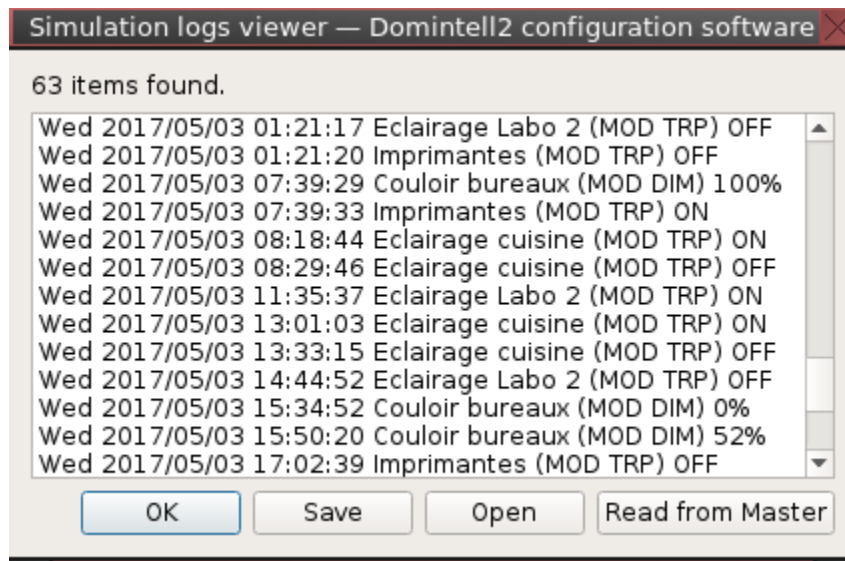


Illustration 8: Simulation log window

- Temperature log from last 24h can be read from DGQG01 and showed in graphic.

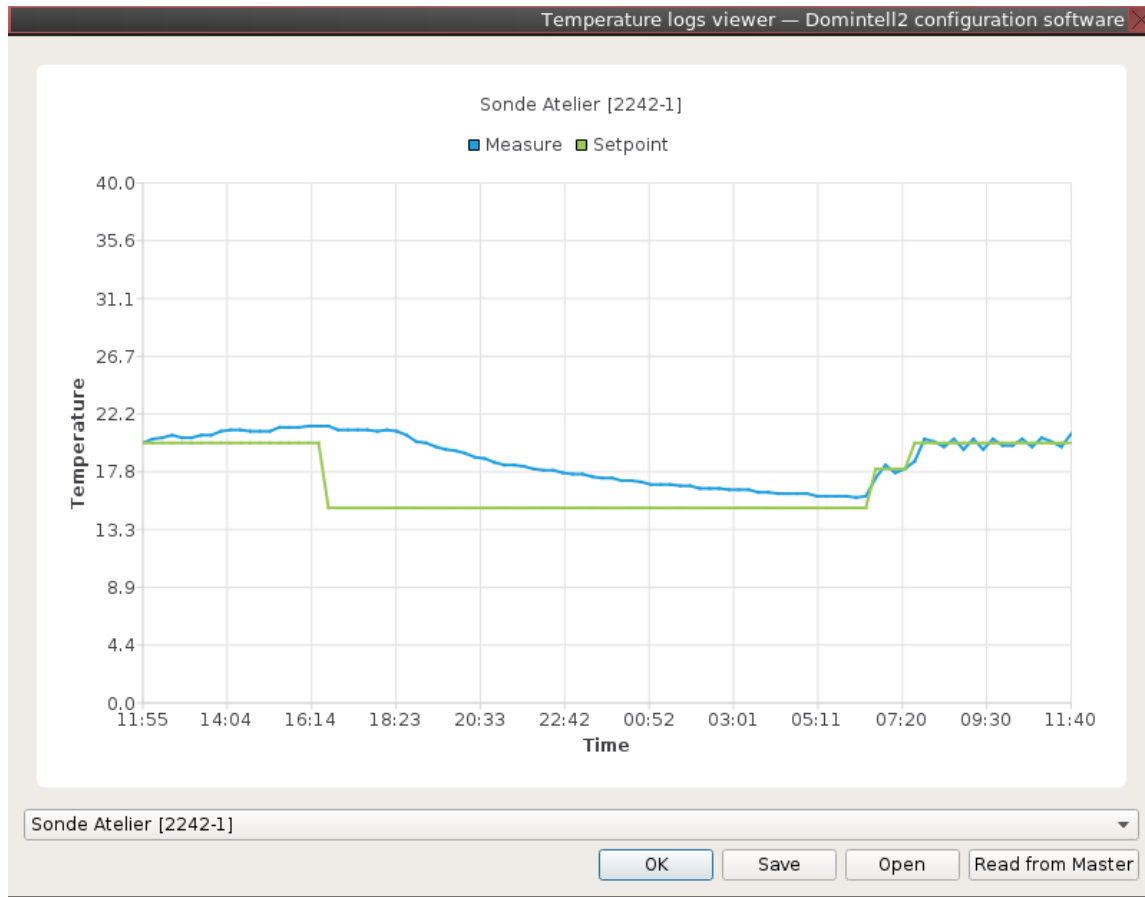


Illustration 9: Temperature log window

Shortcuts

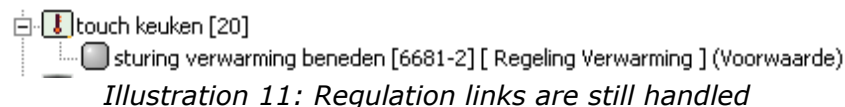
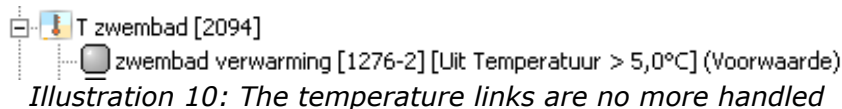
Some shortcuts may vary on depending on the platform.

- Main window
 - CTRL+N | CTRL+W : New empty application.
 - CTRL+S : Save application.
 - CTRL+SHIFT+S : Save application to a new filename.
 - CTRL+F : Search where the selected item is used.
 - CTRL+SHIFT+F : Search where all associated items of a module are used.
 - CTRL+Q : Quit GoldeGate.
 - CTRL+C : Copy text of currently selected item in main window to system clipboard. If tooltip is displayed, text in tooltip will also be copied. If a link is selected, the associated data will be copied in GoldenGate clipboard.
 - CTRL+V : If a link has been previously copied a new link will be paste/created on the currently selected input.
 - ALT+RETURN : Show edit/parameter dialog of the selected item.
 - ALT+SHIFT+F and ALT+F : Unfold and fold all nodes in room, input and output panes.
 - F1 : Show "About" dialog with version of all modules. informations about application and OS in Master has been moved to the "Update and Diagnosis" dialog.
 - Hidden text "debugon" : enable debug mode of Master.
 - Hidden text "debugoff" : disable debug mode of Master.
 - Hidden text "support" : **not working anymore**.
 - F2 : Rename the selected item.
 - F6 : Show "Update and Diagnosis" dialog. Also contains information about

- application and OS in the Master.
- CTRL+click : in PC Active mode, this allow to toggle outputs/variables/memo/scene or execute links from inputs.
- Groups, zones and ambiances creation dialog
 - Delete or ALT+Right in left pane : remove the selected item from the group or the ambiance.
 - Insert or ALT+Left in right pane : add selected item to the group or the ambiance.
- Modules handling dialog
 - Delete or ALT+Right in left pane : remove the selected item from the group or the ambiance.
 - Insert or ALT+Left in right pane : add selected item to the group or the ambiance.

Limitations/Known issues

- **Always contact support before upgrading an older installation (1.27 or earlier) to GoldenGate.**
- **If the database of images was generated with a version earlier to 1.13.0, the database SHOULD be regenerated (See support menu) !**
- Software is only in English, French, Dutch and Spanish for now. Package to translate in other languages is available at <http://pro.mydomintell.com/share/soft-goldengate/translations/>.
- The following modules **are no more supported**. They will be automatically removed from the application.
 - DETH04
 - DETH07
 - DCF01
 - DCOMINT01
 - DGRAPH
 - DUSB01
 - DRS23203
 - DLCD01
 - DLCD02
 - DLCD03
 - DTSC01
 - DTSC03
- The following modules are not yet supported. They will be available as soon as possible.
 - DPULS01
 - DIREMIT01
- Temperature links (higher than, lower than) are no more handled. Regulation links (proportional, direct) are still handled.



Report bugs

If a bug run on your screen, send us a printscreen, the procedure to reproduce the bug, the DAP file, the log file.

- My Documents->Domintell2->Log :

- the latest goldengate-log-x.log file
- the newest logfile_x.log file
- the file with your DAP filename ending by "_info.txt", if any (ie. "Dupont_v12707_v6.dap_info.txt")
- My Documents->Domintell2->V30 :
 - the DAP file (ie. "Dupont_v12704_v6.dap")

What must be tested

- When you connect via DETH03 with a password set
- Dap file conversion and saving :
 1. Open a DAP file in Domintell2 software
 2. Open a **copy** of this DAP file in GoldenGate.
 3. Verify that the name of IO, module, room, ... are correct (accent, length, ...).
 4. Verify links, conditions,...
 5. Save the dap file on a new name (Save As)
 6. Close (CTRL+W) current DAP file in GoldenGate and open your new DAP file saved at step 5.
 7. Check if everything is OK.
- When you modify one parameter in the application (add module, memo, scan bus with unscanned module, create/modify link, rename IO, ...) please check each time that a asterisk (*) appears in the title of the window, the icon save becomes available. Save immediately the application the be able to see if the next modification you will made enable again the save button.
- Open dap DI2 + GoldenGate check matching
- Save As this file in GoldenGate close + reopen and check if everything OK

Changelog

- Version 1.46.0
 - New features/Improvements
 - Creation of database of images at first use of GoldenGate has been speed-up. (#2476)
 - Memo Dali it is now possible to select output intensity for a temporisation. (#2483)
 - Periodic event: it is now possible to edit reload option for a timer. (#2544)
 - Bugs fixed
 - Updating a STM32 module in loader is now possible in flasher form. (#2216)
 - No crash when a module is deleted while search tab is open. (#2323)
 - It is now possible to place DIN10V02 sensor into a room/floor. (#2388)
 - Entries 8 and 16 on module DISM20 work now correctly. (#2396)
 - DPBR0x Led indicators is now correctly displayed in PC active mode. (#2481)
 - It is now possible to make on change link between a output and shutters outputs (#2542)
 - DINTDALI01 groups: dimmer value is now correctly handled. (#2578)
 - GoldenGate does not crash anymore when a creation of a link is validated or aborted. (#2583)
 - It is now possible to save a temperature profile when a serie/range is removed. (#2592)
 - DGSM01: Contacts and empty texts with non-ASCII characters are not correctly imported/saved. (#2631)
 - Limitations
 - Some languages are not yet available in translations. Contact us at support@domintell.com.

- First generation of database of images can be slow on some systems.
- Temperature links are no more handled.
- IP configuration of DNET01 with firmware version earlier than 4.0.0 can be erratic. If an IP address 169.254.x.x is shown in static while a static one is forced or a DHCP server is present on LAN, a direct connection between DNET01 and the computer must be used to be able to update the firmware using USB cable.
- Known bugs
 - DGSM01 : status panel may not be shown. (#1336)
 - Connection to a DETH03 may fail under Windows or MacOS. (#1364)
 - Images on DPBTLCD0x/DPBRLCD02 are corrupted when images are sent using DETH03. (#1586)
 - Crash when two successive commitments are performed on DINTDALI01. (#1509)
 - Update may hang if a conflict of IP occurs. (#1535)
 - DRS23201 are not handled in atmospheres. (#1600)
 - It is not possible to add conditions when a link has just been created on Mac. (#1649)
- Version 1.45.0
 - New features/Improvements
 - Detection of DNET01 has been improved. DNET01 should be updated to version 8 or newer to have the best behavior. (#2311)
 - Gateway and DNS used by DNET01 module are now shown in status panel. DNET01 with version 8.0 or newer is required. (#2312)
 - It is now possible to remove radio stations using Delele key in station control dialog. (#2315)
 - It is now possible to remove radio groups using Delele key in station group dialog. (#2321)
 - Bugs fixed
 - Icons in GoldenGate are now correctly displayed. (#2299)
 - All modules are now correctly initialized when DAP file is sent if a DIREMIT01 does not reply on bus. (#2306)
 - It is now possible to connect again to DNET01. Version 1.44 broke it. (#2309)
 - It is now possible to place classic and system variables into a room/floor. Tickets #2116 and #2119 in version 1.44 did not fully solve the problem. (#2310)
 - DAP file does not take twice size than required anymore. (#2317)
 - Radio stations are no more displayed twice in dialog that handles group of radio stations. (#2320)
 - Limitations
 - Some languages are not yet available in translations. Contact us at support@domintell.com.
 - First generation of database of images can be slow on some systems.
 - Temperature links are no more handled.
 - IP configuration of DNET01 with firmware version earlier than 4.0.0 can be erratic. If an IP address 169.254.x.x is shown in static while a static one is forced or a DHCP server is present on LAN, a direct connection between DNET01 and the computer must be used to be able to update the firmware using USB cable.
 - Known bugs
 - DGSM01 : status panel may not be shown. (#1336)
 - Connection to a DETH03 may fail under Windows or MacOS. (#1364)
 - Images on DPBTLCD0x/DPBRLCD02 are corrupted when images are sent using DETH03. (#1586)
 - Crash when two successive commitments are performed on DINTDALI01.

- (#1509)
 - Update may hang if a conflict of IP occurs. (#1535)
 - DRS23201 are not handled in atmospheres. (#1600)
 - It is not possible to add conditions when a link has just been created on Mac. (#1649)
 - DRS23201: Module is not detected as used and can be removed while used in links. (#1752)
 - DOUT10V02: Dimmer value action is not available in spheres/scenes. (#1758)
 - Groups: It is not possible to remove an output in edition dialog using drag-and-drop. (#1759)
 - DOUT10V02: Conditions "greater/smaller than" for DOUT10V02 output are not working. (#1760)
 - DRS23201: It is not possible to search where the module is used. "Search module" function not available. (#1763)
- Version 1.44.0
 - New features/Improvements
 - It is now possible to create link in PC active mode. An option is available in Display menu. (#2157)
 - Bugs fixed
 - It is now possible to make a link between DIN10V02 and DINTDALI01 slave. (#2082)
 - It is now possible to make link between a onchange event for a variable and a DPBRLCD02 output. (#2110)
 - It is now possible to make a link with onchange event for a DOUT10V02. (#2111)
 - It is now possible to make a link with onchange event for led indicators outputs. (#2113)
 - It is now possible to move variables into a room/floor. (#2116)
 - It is now possible to move system variables into a room/floor. (#2119)
 - IR inputs are now handled in PC active mode. (#2139)
 - DPBLCD0x/DPBRLCD02 can now be correctly configured correctly with HDPI screen. (#2252)
 - Temperature profile: Profile can now be saved if it is used by a temperature sensor. (#2261 and #2277)
 - DTSC02/DTSC04: It is now possible to update DTSC0x while there is no O.S. in it (version 0.0.0). (#2271)
 - Correct version is now displayed alongside "Updating to" text when O.S. files have been sent. (#2273)
 - Limitations
 - Some languages are not yet available in translations. Contact us at support@domintell.com.
 - First generation of database of images can be slow on some systems.
 - Temperature links are no more handled.
 - IP configuration of DNET01 with firmware version earlier than 4.0.0 can be erratic. If an IP address 169.254.x.x is shown in static while a static one is forced or a DHCP server is present on LAN, a direct connection between DNET01 and the computer must be used to be able to update the firmware using USB cable.
 - Known bugs
 - DGSM01 : status panel may not be shown. (#1336)
 - Connection to a DETH03 may fail under Windows or MacOS. (#1364)
 - Images on DPBTLCD0x/DPBRLCD02 are corrupted when images are sent using DETH03. (#1586)
 - Crash when two successive commitments are performed on DINTDALI01.

- (#1509)
 - Update may hang if a conflict of IP occurs. (#1535)
 - DRS23201 are not handled in atmospheres. (#1600)
 - It is not possible to add conditions when a link has just been created on Mac. (#1649)
 - DRS23201: Module is not detected as used and can be removed while used in links. (#1752)
 - DOUT10V02: Dimmer value action is not available in spheres/scenes. (#1758)
 - Groups: It is not possible to remove an output in edition dialog using drag-and-drop. (#1759)
 - DOUT10V02: Conditions "greater/smaller than" for DOUT10V02 output are not working. (#1760)
 - DRS23201: It is not possible to search where the module is used. "Search module" function not available. (#1763)
 - Background of some icons in GoldenGate is black. (#2299)
- Version 1.43.0
 - New features/Improvements
 - Translations have been updated : Hebrew, Slovak, Swedish and Russian. Thank you to contributors.
 - Bugs fixed
 - DPBC0x modules can now be moved in any floor/room. (#2044)
 - Cities for Kazakhstan has been imported from Domintell2 software. (#2052)
 - It is now possible to connect on DNET01 with a password. (#2053)
 - Russian cities for astronomical clock are now showing the correct sunrise/sunset time. (#2055)
 - Application with charset other than CP1252 (Western Europe) can now be read from DGQG01 without corrupt texts (was replaced by question mark "?"). (#2056)
 - DTSC02/04: temperature is now shown in pc active mode. (#2063)
 - DPBC01/02/04/06 modules are now correctly named in the parameter dialog and their default name. (#2065)
 - DIN10V01: Statuses are now correctly shown in PC active mode. Profiles are also correctly handled. (#2069, #2070)
 - It is now possible to reconnect to DGQG01 using USB. (#2079)
 - Followers on variables are now correctly automatically generated. (#2107)
 - Groups automatically generated for followers are now correctly removed. (#2107)
 - It is now possible to create conditions on led indicator of DPBLC0x. (#2109)
 - Limitations
 - Some languages are not yet available in translations. Contact us at support@domintell.com.
 - First generation of database of images can be slow on some systems.
 - Temperature links are no more handled.
 - IP configuration of DNET01 with firmware version earlier than 4.0.0 can be erratic. If an IP address 169.254.x.x is shown in static while a static one is forced or a DHCP server is present on LAN, a direct connection between DNET01 and the computer must be used to be able to update the firmware using USB cable.
 - Known bugs
 - DGSM01 : status panel may not be shown. (#1336)
 - Connection to a DETH03 may fail under Windows or MacOS. (#1364)
 - Images on DPBTLCD0x/DPBRLCD02 are corrupted when images are sent using DETH03. (#1586)

- Crash when two successive commitments are performed on DINTDALI01. (#1509)
- Update may hang if a conflict of IP occurs. (#1535)
- DRS23201 are not handled in atmospheres. (#1600)
- It is not possible to add conditions when a link has just been created on Mac. (#1649)
- DRS23201: Module is not detected as used and can be removed while used in links. (#1752)
- DOUT10V02: Dimmer value action is not available in spheres/scenes. (#1758)
- Groups: It is not possible to remove an output in edition dialog using drag-and-drop. (#1759)
- DOUT10V02: Conditions "greater/smaller than" for DOUT10V02 output are not working. (#1760)
- DRS23201: It is not possible to search where the module is used. "Search module" function not available. (#1763)
- Temperature profile: Profile can not be saved if it is used by a temperature sensor. (#1776)
- Auto-reconnection fails when connection with a DNET01 or a DGQG02 is lost. (#1796)
- Version 1.42.0
 - New features/Improvements
 - Conditions for `_time between_` are now correctly evaluated. (#2008)
 - Output for DDMX01 and DDMX02 can now be used in on-change event. (#2020)
 - Conditions `_greater than_/_smaller than_` for DIN10V02 are now handled. (#2023)
 - Conditions `_greater than_/_smaller than_` for DOUT10V02 are now handled. (#2024)
 - DOUT10V02 outputs are now available in dimmer tab in condition dialog. (#2028)
 - It is now possible to select a dimmer value in scenes for DOUT10V02. (#2029)
 - Bugs fixed
 - DPBLCD01/02: Version 93/94 of firmware solved problem of special menus that are corrupted when screensaver is left. (#1969)
 - LightProtocol: Offset of variables is no more shifted by one. OS 30.9.8 of DGQG01 is needed. (#1972)
 - GoldenGate does not crash anymore when PC active is enabled while application contains DPBL0x. (#1973)
 - DINTDALI01: Broadcast parameter in DALI links is now correctly loaded when DAP file is opened. (#1975)
 - Language for displays is now correctly selected in regional settings dialog even when no translation is available for this language. (#1999)
 - DGSM01: All links on GSM input are now saved in DAP file. (#2003)
 - Variables can not be removed anymore when they are still in use. (#2032 + #1761)
 - Text `_Higher than_` and `_Smaller than_` are no more swapped in conditions. (#2034)
 - Limitations
 - Some languages are not yet available in translations. Contact us at support@domintell.com.
 - First generation of database of images can be slow on some systems.
 - Temperature links are no more handled.
 - IP configuration of DNET01 with firmware version earlier than 4.0.0 can be erratic. If an IP address 169.254.x.x is shown in static while a static one is forced

or a DHCP server is present on LAN, a direct connection between DNET01 and the computer must be used to be able to update the firmware using USB cable.

- Known bugs
 - DGSM01 : status panel may not be shown. (#1336)
 - Connection to a DETH03 may fail under Windows or MacOS. (#1364)
 - Images on DPBTLCD0x/DPBRLCD02 are corrupted when images are sent using DETH03. (#1586)
 - Crash when two successive commitments are performed on DINTDALI01. (#1509)
 - Update may hang if a conflict of IP occurs. (#1535)
 - DRS23201 are not handled in atmospheres. (#1600)
 - It is not possible to add conditions when a link has just been created on Mac. (#1649)
 - DRS23201: Module is not detected as used and can be removed while used in links. (#1752)
 - DOUT10V02: Dimmer value action is not available in spheres/scenes. (#1758)
 - Groups: It is not possible to remove an output in edition dialog using drag-and-drop. (#1759)
 - DOUT10V02: Conditions "greater/smaller than" for DOUT10V02 output are not working. (#1760)
 - DRS23201: It is not possible to search where the module is used. "Search module" function not available. (#1763)
 - Temperature profile: Profile can not be saved if it is used by a temperature sensor. (#1776)
 - Auto-reconnection fails when connection with a DNET01 or a DGQG02 is lost. (#1796)
- Version 1.41.0
 - New features/Improvements
 - Limitation of GoldenGate 1.x to DGQG01 is now explicitly notified. (#1991)
 - DNET01: Sessions can now be password protected. Version 5.0.0+ of DNET01 is needed. (#2000)
 - It is now possible to check if a new version is available directly from GoldenGate via Help menu. (#2004)
 - Bugs fixed
 - DPBLCD01/02: Version 93/94 of firmware solved problem of special menus that are corrupted when screensaver is left. (#1969)
 - LightProtocol: Offset of variables is no more shifted by one. OS 30.9.8 of DGQG01 is needed. (#1972)
 - GoldenGate does not crash anymore when PC active is enabled while application contains DPBL0x. (#1973)
 - DINTDALI01: Broadcast parameter in DALI links is now correctly loaded when DAP file is opened. (#1975)
 - Language for displays is now correctly selected in regional settings dialog even when no translation is available for this language. (#1999)
 - DGSM01: All links on GSM input are now saved in DAP file. (#2003)
 - Limitations
 - Some languages are not yet available in translations. Contact us at support@domintell.com.
 - First generation of database of images can be slow on some systems.
 - Temperature links are no more handled.
 - IP configuration of DNET01 with firmware version earlier than 4.0.0 can be erratic. If an IP address 169.254.x.x is shown in static while a static one is forced

or a DHCP server is present on LAN, a direct connection between DNET01 and the computer must be used to be able to update the firmware using USB cable.

- Known bugs
 - DGSM01 : status panel may not be shown. (#1336)
 - Connection to a DETH03 may fail under Windows or MacOS. (#1364)
 - Images on DPBTLCD0x/DPBRLCD02 are corrupted when images are sent using DETH03. (#1586)
 - Crash when two successive commitments are performed on DINTDALI01. (#1509)
 - Update may hang if a conflict of IP occurs. (#1535)
 - DRS23201 are not handled in atmospheres. (#1600)
 - It is not possible to add conditions when a link has just been created on Mac. (#1649)
 - DRS23201: Module is not detected as used and can be removed while used in links. (#1752)
 - DOUT10V02: Dimmer value action is not available in spheres/scenes. (#1758)
 - Groups: It is not possible to remove an output in edition dialog using drag-and-drop. (#1759)
 - DOUT10V02: Conditions "greater/smaller than" for DOUT10V02 output are not working. (#1760)
 - Variables can be removed while they are used in application. (#1761)
 - DRS23201: It is not possible to search where the module is used. "Search module" function not available. (#1763)
 - Temperature profile: Profile can not be saved if it is used by a temperature sensor. (#1776)
 - Auto-reconnection fails when connection with a DNET01 or a DGQG02 is lost. (#1796)
- Version 1.40.1
 - New features/Improvements
 - (none)
 - Bugs fixed
 - GoldenGate does not freeze anymore when application contains more than 4 zones. (#1964)
 - Limitations
 - Some languages are not yet available in translations. Contact us at support@domintell.com.
 - First generation of database of images can be slow on some systems.
 - Temperature links are no more handled.
 - IP configuration of DNET01 with firmware version earlier than 4.0.0 can be erratic. If an IP address 169.254.x.x is shown in static while a static one is forced or a DHCP server is present on LAN, a direct connection between DNET01 and the computer must be used to be able to update the firmware using USB cable.
 - Known bugs
 - DGSM01 : status panel may not be shown. (#1336)
 - Connection to a DETH03 may fail under Windows or MacOS. (#1364)
 - Images on DPBTLCD0x/DPBRLCD02 are corrupted when images are sent using DETH03. (#1586)
 - Crash when two successive commitments are performed on DINTDALI01. (#1509)
 - Update may hang if a conflict of IP occurs. (#1535)
 - DRS23201 are not handled in atmospheres. (#1600)
 - It is not possible to add conditions when a link has just been created on Mac.

- (#1649)
 - DRS23201: Module is not detected as used and can be removed while used in links. (#1752)
 - DOUT10V02: Dimmer value action is not available in spheres/scenes. (#1758)
 - Groups: It is not possible to remove an output in edition dialog using drag-and-drop. (#1759)
 - DOUT10V02: Conditions "greater/smaller than" for DOUT10V02 output are not working. (#1760)
 - Variables can be removed while they are used in application. (#1761)
 - DRS23201: It is not possible to search where the module is used. "Search module" function not available. (#1763)
 - Temperature profile: Profile can not be saved if it is used by a temperature sensor. (#1776)
 - Auto-reconnection fails when connection with a DNET01 or a DGQG02 is lost. (#1796)
- Version 1.40.0
 - New features/Improvements
 - (none)
 - Bugs fixed
 - Connection to DETH03 are now possible again. The connection due to IPv6 translation may still occur on Windows or Mac (see #1364). (#1925)
 - DPB(T/R)LCD: "Display name" and "Display value" options are not more forced to set when DAP is saved. (#1932)
 - Parameters of DTRVBT are now correctly handled. (#1933)
 - Statuses of DTRVBT01 are now correctly displayed in PC active mode. (#1935)
 - GoldenGate does not crash anymore when a variable/group/zone is deleted while a search is running. (#1927)
 - The button "Apply now" in parameter form of DVIP01/DVIP02 is now working. (#1959)
 - Limitations
 - Some languages are not yet available in translations. Contact us at support@domintell.com.
 - First generation of database of images can be slow on some systems.
 - Temperature links are no more handled.
 - IP configuration of DNET01 with firmware version earlier than 4.0.0 can be erratic. If an IP address 169.254.x.x is shown in static while a static one is forced or a DHCP server is present on LAN, a direct connection between DNET01 and the computer must be used to be able to update the firmware using USB cable.
 - Known bugs
 - DGSM01 : status panel may not be shown. (#1336)
 - Connection to a DETH03 may fail under Windows or MacOS. (#1364)
 - Images on DPBTLCD0x/DPBRLCD02 are corrupted when images are sent using DETH03. (#1586)
 - Crash when two successive commitments are performed on DINTDALI01. (#1509)
 - Update may hang if a conflict of IP occurs. (#1535)
 - DRS23201 are not handled in atmospheres. (#1600)
 - It is not possible to add conditions when a link has just been created on Mac. (#1649)
 - DRS23201: Module is not detected as used and can be removed while used in links. (#1752)
 - DOUT10V02: Dimmer value action is not available in spheres/scenes. (#1758)

- Groups: It is not possible to remove an output in edition dialog using drag-and-drop. (#1759)
 - DOUT10V02: Conditions "greater/smaller than" for DOUT10V02 output are not working. (#1760)
 - Variables can be removed while they are used in application. (#1761)
 - DRS23201: It is not possible to search where the module is used. "Search module" function not available. (#1763)
 - Temperature profile: Profile can not be saved if it is used by a temperature sensor. (#1776)
 - Auto-reconnection fails when connection with a DNET01 or a DGQG02 is lost. (#1796)
- Version 1.19.0
 - New features/Improvements
 - Changelog is viewable even if module is up to date. (#1893)
 - Bugs fixed
 - Any city can now be used for astronomical clock. (#1894)
 - Informations about application are now correctly shown in diagnostic dialog. (#1895)
 - Limitations
 - Some languages are not yet available in translations. Contact us at support@domintell.com.
 - First generation of database of images can be slow on some systems.
 - Temperature links are no more handled.
 - IP configuration of DNET01 with firmware version earlier than 4.0.0 can be erratic. If an IP address 169.254.x.x is shown in static while a static one is forced or a DHCP server is present on LAN, a direct connection between DNET01 and the computer must be used to be able to update the firmware using USB cable.
 - Known bugs
 - DGSM01 : status panel may not be shown. (#1336)
 - Connection to a DETH03 may fail under Windows or MacOS. (#1364)
 - Images on DPBTLCD0x/DPBRLCD02 are corrupted when images are sent using DETH03. (#1586)
 - Crash when two successive commitments are performed on DINTDALI01. (#1509)
 - Update may hang if a conflict of IP occurs. (#1535)
 - DRS23201 are not handled in atmospheres. (#1600)
 - It is not possible to add conditions when a link has just been created on Mac. (#1649)
 - DRS23201: Module is not detected as used and can be removed while used in links. (#1752)
 - DOUT10V02: Dimmer value action is not available in spheres/scenes. (#1758)
 - Groups: It is not possible to remove an output in edition dialog using drag-and-drop. (#1759)
 - DOUT10V02: Conditions "greater/smaller than" for DOUT10V02 output are not working. (#1760)
 - Variables can be removed while they are used in application. (#1761)
 - DRS23201: It is not possible to search where the module is used. "Search module" function not available. (#1763)
 - Temperature profile: Profile can not be saved if it is used by a temperature sensor. (#1776)
 - Auto-reconnection fails when connection with a DNET01 or a DGQG02 is lost. (#1796)

- Version 1.18.0
 - New features/Improvements
 - Add handling of DIO01 module (only for DGQG01). (#1808)
 - Status and configuration of time synchronization using NTP is possible for DGQG02. (#1839)
 - Use of protocol Zeroconf/Bonjour/mDNS to improve search of Ethernet module (DNET01/DGQG02/DGQG03/DGQG04) at startup. (#1866)
 - Astronomical clock dialog now shows earliest/latest sunrise and sunset time. (#1872)
 - DTSC02/04 are now handled with NewGen DGQG (DGQG02/DGQG03/DGQG04). (#1873)
 - DGQG02/03/04 and DNET01 can now update a Dyn.com or No-IP DynDNS account. (#1881)
 - DGQG02/03: Add handling of Wiegand led outputs. Needs OS 1.12.4 or newer in DGQG02/03. (#1887)
 - Bugs fixed
 - The IO offset displayed alongside the serial number are now more logic. (#1149)
 - DGQG02: Outputs can now be controlled using PC active mode. (#1818)
 - DTSC02/04: It is now possible to modify the name of outputs (led indicators) from parameters dialog. (#1837)
 - DTSC04: Video output is now always shown even if there is no DVIP0x nor Ip camera configured. (#1838)
 - Time of clock in link dialog is now correctly shown. (#1871)
 - Name of application is no more truncated if it ends with letters 'd', 'a' or 'p'. (#1877)
 - Ethernet parameters of DGQG02/03/04 are now correctly read/saved from/to DAP file. (#1884)
 - DTSC02/04: Images of scene, variable and zone are now correct ones. (#1889)
 - Limitations
 - Some languages are not yet available in translations. Contact us at support@domintell.com.
 - First generation of database of images can be slow on some systems.
 - Temperature links are no more handled.
 - IP configuration of DNET01 with firmware version earlier than 4.0.0 can be erratic. If an IP address 169.254.x.x is shown in static while a static one is forced or a DHCP server is present on LAN, a direct connection between DNET01 and the computer must be used to be able to update the firmware using USB cable.
 - Known bugs
 - DGSM01 : status panel may not be shown. (#1336)
 - Connection to a DETH03 may fail under Windows or MacOS. (#1364)
 - Images on DPBTLCD0x/DPBRLCD02 are corrupted when images are sent using DETH03. (#1586)
 - Crash when two successive commitments are performed on DINTDALI01. (#1509)
 - Update may hang if a conflict of IP occurs. (#1535)
 - DRS23201 are not handled in atmospheres. (#1600)
 - It is not possible to add conditions when a link has just been created on Mac. (#1649)
 - DRS23201: Module is not detected as used and can be removed while used in links. (#1752)
 - DOUT10V02: Dimmer value action is not available in spheres/scenes. (#1758)
 - Groups: It is not possible to remove an output in edition dialog using drag-and-

- drop. (#1759)
- DOUT10V02: Conditions "greater/smaller than" for DOUT10V02 output are not working. (#1760)
- Variables can be removed while they are used in application. (#1761)
- DRS23201: It is not possible to search where the module is used. "Search module" function not available. (#1763)
- Temperature profile: Profile can not be saved if it is used by a temperature sensor. (#1776)
- Auto-reconnection fails when connection with a DNET01 or a DGQG02 is lost. (#1796)
- Version 1.17.0
 - New features/Improvements
 - More informations are displayed in PC active mode for temperature sensors : current regulation mode, current sensor mode and current setpoint. (#1613)
 - It is now possible to select a different language for GoldenGate than the one used for the application (DAP file). (#1829)
 - Bugs fixed
 - Configuration of the DPBTLCD0x/DPBRLCD02 is now correctly imported from version 1.27. Duplicated images are now shown on DPBTLCD0x/DPBRLCD02. (#1647)
 - Application with DPBC01/DPBC02/DPBC04/DPBC06 or DPBL01/DPBL02/DPBL04 does not crash GoldenGate anymore. (#1821)
 - Statuses of DNET01 with old version of firmware (earlier than 4.0.0) were not correctly handled. (#1822)
 - Default action when creating a link with a DMX slave/output is now correctly set to "DMX dimmer function". (#1824)
 - Name of IOs of DTRV01 are now saved when parameters' dialog is closed. (#1826)
 - Several bugs have been fixed in station control dialog. (#1827)
 - DTSC02/DTSC04/DVIP01/DVIP02: Texts are displayed using the language selected in regional settings. (#1828)
 - Limitations
 - Some languages are not yet available in translations. Contact us at support@domintell.com.
 - First generation of database of images can be slow on some systems.
 - Temperature links are no more handled.
 - IP configuration of DNET01 with firmware version earlier than 4.0.0 can be erratic. If an IP address 169.254.x.x is shown in static while a static one is forced or a DHCP server is present on LAN, a direct connection between DNET01 and the computer must be used to be able to update the firmware using USB cable.
 - Known bugs
 - DGSM01 : status panel may not be shown. (#1336)
 - Connection to a DETH03 may fail under Windows or MacOS. (#1364)
 - Images on DPBTLCD0x/DPBRLCD02 are corrupted when images are sent using DETH03. (#1586)
 - Crash when two successive commitments are performed on DINTDALI01. (#1509)
 - Update may hang if a conflict of IP occurs. (#1535)
 - DRS23201 are not handled in atmospheres. (#1600)
 - It is not possible to add conditions when a link has just been created on Mac. (#1649)
 - DRS23201: Module is not detected as used and can be removed while used in

- links. (#1752)
 - DOUT10V02: Dimmer value action is not available in spheres/scenes. (#1758)
 - Groups: It is not possible to remove an output in edition dialog using drag-and-drop. (#1759)
 - DOUT10V02: Conditions "greater/smaller than" for DOUT10V02 output are not working. (#1760)
 - Variables can be removed while they are used in application. (#1761)
 - DRS23201: It is not possible to search where the module is used. "Search module" function not available. (#1763)
 - Temperature profile: Profile can not be saved if it is used by a temperature sensor. (#1776)
 - Auto-reconnection fails when connection with a DNET01 or a DGQG02 is lost. (#1796)
- Version 1.16.0
 - **Image database must be once regenerated if GoldenGate is updated from a version prior to 1.13**
 - New features
 - Images in "Various" category in dialog to select icons is now available without regenerate database. (#1803)
 - Bugs fixed
 - Application is no more corrupted when read using DNET01. Also need firmware 4.7.0 in DNET01. (#1799)
 - Limitations
 - Some languages are not yet available in translations. Contact us at support@domintell.com.
 - First generation of database of images can be slow on some systems.
 - Temperature links are no more handled.
 - Known bugs
 - DGSM01 : status panel may not be shown. (#1336)
 - Connection to a DETH03 may fail under Windows or MacOS. (#1364)
 - Images on DPBTLCD0x/DPBRLCD02 are corrupted when images are sent using DETH03. (#1586)
 - Crash when two successive commitments are performed on DINTDALI01. (#1509)
 - Update may hang if a conflict of IP occurs. (#1535)
 - DRS23201 are not handled in atmospheres. (#1600)
 - Configuration of the DPBTLCD0x/DPBRLCD02 is not correctly imported from version 1.27. (#1647)
 - It is not possible to add condition on link creation. (#1649)
 - DRS23201: Module is not detected as used and can be removed while used in links. (#1752)
 - DOUT10V02: Dimmer value action is not available in spheres/scenes. (#1758)
 - Groups: It is not possible to remove an output in edition dialog using drag-and-drop. (#1759)
 - DOUT10V02: Conditions "greater/smaller than" for DOUT10V02 output are not working. (#1760)
 - Variables can be removed while they are used in application. (#1761)
 - DRS23201: It is not possible to search where the module is used. "Search module" function not available. (#1763)
 - Temperature profile: Profile can not be saved if it is used by a temperature sensor. (#1776)
 - Auto-reconnection fails when connection with a DNET01 or a DGQG02 is lost.

(#1796)

- Version 1.15.4
 - **Image database must be once regenerated if GoldenGate is updated from a version prior to 1.13**
 - New features
 - Shown changelog in flasher dialog when available. (#1754)
 - "Day" variable as been renamed to "Day/Night". (#1770)
 - Diagnostic dialog: Tabs are now disabled when tests are performed. (#1772)
 - DNET01/DGQG02: Search of communication ports over several Ethernet interfaces has been improved. (#1780)
 - Bugs fixed
 - All pictures in "various" category are now available for DTSC02/DTSC04. DB must be regenerated ! (#1317)
 - Multiple selection is no more possible when PC active mode is left. (#1627)
 - DTSC02/DTSC04/DVIP01/DVIP02: Sending application to Master does not freeze anymore when module does not reply. (#1677)
 - DFAN01: Status is not correctly displayed in PC active mode. (#1744)
 - An empty application could not be sent to DGQG01 anymore. (#1753)
 - It is now possible to change order of links in on-change event node. (#1764)
 - DTSC02/DTSC04: It is not possible to change the order of rooms/floors in edition dialog of screen layout. (#1767)
 - The name of system variable Day can be confusing and has been renamed. (#1770)
 - DALI groups: Rising time for dimmer value action is ignored when link is saved. (#1771)
 - When the language of the interface is modified, the application can be saved again. (#1773)
 - DDMX01: Scene containing Dimmer value on DDMX01 output are not correctly imported from older DAP and exported to DGQG01. (#1777)
 - DAMPLI01: Statuses are not displayed in PC active mode. (#1778)
 - Pushed buttons when PC active is enabled are ignored. (#1779)
 - It is now possible to unselect an item in output tree after disabling the PC active mode. Fix regression of #1627. (#1789)
 - DGQG01 is now detected as up-to-date when file version is 3.9.4 and OS in Master is 30.9.4.0. (#1790)
 - DTSC02/DTSC04/DVIP01/DVIP02: Current OS version is shown instead of bus version when update is available. (#1791)
 - PC active: the feedback of variable with offset higher than 127 is now correctly displayed. (#1792)
 - Variables have now the correct green/red flag as default icon on DTSC02/DTSC04. (#1793)
 - Limitations
 - Some languages are not yet available in translations. Contact us at support@domintell.com.
 - First generation of database of images can be slow on some systems.
 - Temperature links are no more handled.
 - Known bugs
 - DGSM01 : status panel may not be shown. (#1336)
 - Connection to a DETH03 may fail under Windows or MacOS. (#1364)
 - Images on DPBTLCD0x/DPBRLCD02 are corrupted when images are sent using DETH03. (#1586)
 - Crash when two successive commitments are performed on DINTDALI01.

- (#1509)
 - Update may hang if a conflict of IP occurs. (#1535)
 - DRS23201 are not handled in atmospheres. (#1600)
 - Configuration of the DPBTLCD0x/DPBRLCD02 is not correctly imported from version 1.27. (#1647)
 - It is not possible to add condition on link creation. (#1649)
 - DRS23201: Module is not detected as used and can be removed while used in links. (#1752)
 - DOUT10V02: Dimmer value action is not available in spheres/scenes. (#1758)
 - Groups: It is not possible to remove an output in edition dialog using drag-and-drop. (#1759)
 - DOUT10V02: Conditions "greater/smaller than" for DOUT10V02 output are not working. (#1760)
 - Variables can be removed while they are used in application. (#1761)
 - DRS23201: It is not possible to search where the module is used. "Search module" function not available. (#1763)
 - Temperature profile: Profile can not be saved if it is used by a temperature sensor. (#1776)
- Version 1.14.0
 - **Image database must be once regenerated if GoldenGate is updated from a version prior to 1.13**
 - New features
 - It is now possible to remove an item from a group/ambiance directly from the main window using contextual menu. (#1722)
 - It is now possible to start a fast scan using a DGQG01. List of module in application in DGQG01 flash/memory is used. The application in DGQG01 memory must contain most of modules currently connected to the bus to be effective. (#1729)
 - Size of the application is now tested when an application is converted from 1.27 or before to be sent to DGQG01 (DGQG01 is limited to 512kB of compiled application). (#1736, #1737)
 - Index of currently processed module is now shown in status bar of diagnostic dialog. (#1741)
 - Name of a temperature sensor can be change from paramter dialog. (#1745)
 - Bugs fixed
 - DTSC04: Video output was visible in screen layout. (#1672)
 - - IR sensor node is opened each time the room/floor is changed. (#1679)
 - DIN10V02: Link with a group was not possible. (#1692)
 - Temperature profile was corrupted when negative temperatures were set. (#1693)
 - Astronomical clock dialog: City was always set to Brussels. (#1704)
 - Link: Some parameters were not saved if tab is not visible (new press, tempo dimmer, canaux DMX). (#1706)
 - DGQG02: It was not possible to move IOs in room/floor. (#1707)
 - DDIM01/DOUT10V02/DGQG02: Icon of dimmer outputs was only 0% or 100%. Now icon changes each 10%. (#1709)
 - DDMX01: Outputs were not updated in PC active mode. (#1714)
 - Regulation links on variables were not imported from 1.27. (#1719)
 - DOUT10V02: Memo mode state was inverted. (#1720)
 - DOUT10V02 outputs were not available in dimmer group. (#1721)
 - Conditions: Tooltip for "time between" condition was not correctly generated in PC active mode. (#1723)

- GoldenGate crashed when a link was created between a temperature zone and a on-change event. (#1727)
- DMOV01/DMOV02/DMOV05: Complex action (dimming function, ...) were allowed. Only on, off, dimmer value, ... are allowed. (#1728)
- Timeout with bus scan was not correctly handled. (#1730)
- In some conditions, version of manually added modules was not updated after a bus scan. (#1731)
- DAP file is now marked as modified when version of modules has been updated. (#1732)
- Application is now prompt for saving when it is in modified state while an other application is going to be read from Master. (#1735)
- Static IP address assigned to DTSC02/DTSC04/DVIP01/DVIP02 are now correctly imported. (#1739)
- It is now possible to create a link between a DGSM01 input and a temperature zone. (#1740)
- DMV01: Statuses are now correctly shown in PC active mode. (#1743)
- Application in DGQG02 can not be erased. (#1746)
- Limitations
 - Some languages are not yet available in translations. Contact us at support@domintell.com.
 - First generation of database of images can be slow on some systems.
 - Temperature links are no more handled.
- Known bugs
 - Some images are missing in icon selection dialog. (#1317)
 - DGSM01 : status panel may not be shown. (#1336)
 - Connection to a DETH03 may fail under Windows or MacOS. (#1364)
 - DRS23201 are not handled in atmospheres. (#1600)
 - Images on DPBTLCD0x/DPBRLCD02 are corrupted when images are sent using DETH03. (#1586)
 - Crash when two successive commitments are performed on DINTDALI01. (#1509)
 - It is not possible to add condition on link creation. (#1649)
 - Configuration of the DPBTLCD0x/DPBRLCD02 is not correctly imported from version 1.27. (#1647)
 - Update may hang if a conflict of IP occurs. (#1535)
 - Multiple selection is no more possible when PC active mode is left. (#1627)
 - DFAN01: Status is not correctly displayed in PC active mode. (#1744)
- Version 1.13.0
 - **Images database should be regenerated (see support menu).**
 - New features
 - Unused modules are shown in blue in scan dialog. (#1699)
 - Bug fixed
 - Output name is now displayed in edition form of DPBLCD01/DPBLCD02/DPBRLCD02. (Bug #1691)
 - Temperature axis are now automatically adjusted with the maximum temperature to display. (Bug #1694)
 - Management of pictures for DPBLCD01/DPBLCD02/DPBRLCD02 has been completely reviewed. (#1697, #1702, #1703)
 - A link with action "Shutter UP" does not force input in long push anymore. (#1700)
 - Feedback in PC active mode of LEDs of DPBL01/DPBL02/DPBL04/DLED01 are now working. (#1698, #1701)

- Limitations
 - Some languages are not yet available in translations. Contact us at support@domintell.com.
 - First generation of database of images can be slow on some systems.
 - **Temperature links are no more handled.**
- Known bugs
 - Some images are missing in icon selection dialog. (#1317)
 - DGSM01 : status panel may not be shown. (#1336)
 - **Connection to a DETH03 may fail under Windows or MacOS.** (#1364)
 - DRS23201 are not handled in atmospheres. (#1600)
 - Images on DPBTLCD0x/DPBRLCD02 are corrupted when images are sent using DETH03. (#1586)
 - Crash when two successive commitments are performed on DINTDALI01. (#1509)
 - It is not possible to add condition on link creation under Mac OS. (#1649)
 - Configuration of the DPBTLCD0x/DPBRLCD02 is not correctly imported from version 1.27. (#1647)
 - Update may hang if a conflict of IP occurs. (#1535)
 - Multiple selection is no more possible when PC active mode is left. (#1627)
 - While sending the application to DTSC02/04, no error returned if OS version mismatches. (#1671)
 - Video output of DTSC04 is shown in the default screen layout (#1672)
 - Sending application dialog can stay blocked on DTSC02/04 (#1677)
 - Application can not be sent if PC active mode is enabled. (#1678)
- Not yet supported modules
 - DPULS01
- Version 1.12.0
 - New features
 - New DPBC0x push-buttons are now officially supported. (#1687)
 - Nodes can be collapsed/expanded using keyboard shortcuts (ALT+F/ALT+SHIFT+F). (#1673)
 - Specific icon is now associated to DMX and DALI groups. (#1682)
 - Number of items in groups can be displayed. (#1683)
 - The type of the group is shown in edit dialog. (#1684)
 - Ethernet statuses are now shown in configuration form of DTSC02/04. (#1689)
 - Bug fixed
 - OK button in image selection dialog is now readable on Mac OS X. (#1674)
 - On DTSC02/04, screen layout dialog is now shown when triggered from IR and temperature node. (#1675)
 - Output of DPBR0x modules are no more shown in presence simulation. (#1680)
 - Working time are now shown for DMR01 and DTRP01. (#1681)
 - Blinking command is now available for link with a memo containing led indicators. (#1686)
 - Items were not correctly associated to their room/floor under some conditions. It is now fixed. (#1690)
 - Limitations
 - Some languages are not yet available in translations. Contact us at support@domintell.com.
 - First generation of database of images can be slow on some systems.
 - **Temperature links are no more handled.**
 - Known bugs
 - Some images are missing in icon selection dialog. (#1317)

- DGSM01 : status panel may not be shown. (#1336)
- Connection to a DETH03 may fail under Windows or MacOS. (#1364)
- DRS23201 are not handled in atmospheres. (#1600)
- Images on DPBTLCD0x/DPBRLCD02 are corrupted when images are sent using DETH03. (#1586)
- Crash when two successive commitments are performed on DINTDALI01. (#1509)
- It is not possible to add condition on link creation under Mac OS. (#1649)
- Configuration of the DPBTLCD0x/DPBRLCD02 is not correctly imported from version 1.27. (#1647)
- Update may hang if a conflict of IP occurs. (#1535)
- Multiple selection is no more possible when PC active mode is left. (#1627)
- While sending the application to DTSC02/04, no error returned if OS version mismatches. (#1671)
- Video output of DTSC04 is shown in the default screen layout (#1672)
- Sending application dialog can stay blocked on DTSC02/04 (#1677)
- Application can not be sent if PC active mode is enabled. (#1678)
- Not yet supported modules
 - DPULS01
- Version 1.11.0
 - New features
 - Links can now be copy/paste using CTRL+C and CTRL+V. (#1198)
 - The description of the currently selected item is copy to system clipboard using CTRL+C. (#1656)
 - Highlight last triggered input in PC active mode. (#1415)
 - Add support of DGQG02. (#1572)
 - Send application to Ethernet module only. (#1623)
 - Groups and variables can now be sorted in alphabetical order. (#1650)
 - It is possible to save and reset the layout of columns of the main window. (#1658)
 - Bug fixed
 - DTSC02/04 are no more tagged as not compatible with GoldenGate. (#1582)
 - It is now possible to move links inside temperature sensors. (#1626)
 - Edition dialog of scene is now correctly displayed for DINTDALI01 outputs. (#1628)
 - Status of DIN10V02 are now always displayed. (#1646)
 - On-change events are not correctly imported from 1.27. (#1648)
 - It is now possible to move links inside periodic events. (#1657)
 - Red led of DPBECO0x stay always OFF. (#1659)
 - Limitations
 - Some languages are not yet available in translations. Contact us at support@domintell.com.
 - First generation of database of images can be slow on some systems.
 - Temperature links are no more handled.
 - Known bugs
 - Some images are missing in icon selection dialog. (#1317)
 - Unable to change icon of temperature sensor inputs. (#1286)
 - DGSM01 : status panel may not be shown. (#1336)
 - Connection to a DETH03 may fail under Windows or MacOS. (#1364)
 - DRS23201 are not handled in atmospheres. (#1600)
 - Images on DPBTLCD0x/DPBRLCD02 are corrupted when images are sent using DETH03. (#1586)

- Crash when two successive commitments are performed on DINTDALI01. (#1509)
- It is not possible to add condition on link creation. (#1649)
- Configuration of the DPBTLCD0x/DPBRLCD02 is not correctly imported from version 1.27. (#1647)
- Update may hang if a conflict of IP occurs. (#1535)
- Multiple selection is no more possible when PC active mode is left. (#1627)
- Not yet supported modules
 - DPULS01
- Version 1.10.2
 - New features
 - Phone number in contacts' list can now be more easily entered. (#1323)
 - Physical values are now displayed alongside the percentage for DIN10V02 inputs. (#1435)
 - It is now possible to search all IOs of a module at once. (#1549)
 - Statuses of variables are now fully handled when PC active is enabled. (#1605)
 - "Master only" variables are now greyed when PC active is enabled. (#1410)
 - UPnP service is available with firmware v4.4.0 of the DNET01. (#1611)
 - It is now possible to select the directory where application should be exported when DTSC02 and DTSC04 are present in application (SD card). (#1621)
 - It is now possible to export OS files of DTSC02 and DTSC04 (SD card). (#1612)
 - Bug fixed
 - Update/Diagnostic dialog can not be closed anymore when an update is running. (#1456)
 - DTSC02/04 are no more reported as incompatible in Update/Diagnostic dialog while they are up to date. (#1582)
 - Connection to a DNET01 under Windows is now possible. (#1594)
 - Conditions for variables are now shown as True/False instead of On/Off. (#1596)
 - Temperature zones and system variables are not imported from DAP file in DTSC02/04 screen layout. (#1598)
 - Link between a DGSM01 input and a scene, a variable or a temperature zone is now working. (#1599)
 - Links on DVIP camera input are now handled. (#1601)
 - When a DAP is opened, main house floor is now selected. (#1602)
 - Some texts used in text links are not correctly displayed. (#1603)
 - "Master only" and system variables are now correctly handled in active PC mode and in tooltips. (#1606/#1607)
 - IP settings are now correctly applied to DNET01. (#1610)
 - Temperature are now displayed in active PC mode. (#1614)
 - Followers on system variables are not imported from DAP file. (#1619)
 - Followers on classic variables are now correctly displayed. (#1618)
 - Conditions on inputs are now handled in tooltips in active PC mode. (#1620)
 - Limitations
 - Some languages are not yet available in translations. Contact us at support@domintell.com.
 - First generation of database of images can be slow on some systems.
 - **Temperature links are no more handled.**
 - Known bugs
 - Some images are missing in icon selection dialog. (#1317)
 - Unable to change icon of temperature sensor inputs. (#1286)
 - DGSM01 : status panel may not be shown. (#1336)
 - **Connection to a DETH03 may fail under Windows or MacOS.** (#1364)

- Number of buttons in DPBLCD0x can be reduced while outputs are still used. (#1617)
- DRS23201 are not handled in atmospheres. (#1600)
- Images on DPBTLCD0x/DPBRLCD02 are corrupted when images are sent using DETH03. (#1586)
- Crash when two successive commitments are performed on DINTDALI01. (#1509)
- Not yet supported modules
 - DPULS01
- Version 1.9.1
 - New features
 - Detect errors when connecting to DGQG01 or an Ethernet module. (#1104/#1579)
 - Statuses sent by DNET01 while its upgrade are now show in diagnostic window. (#1409)
 - DRS2320x, DETH0x, DNET01, DGSM01 and DIN10V02 are now shown in a spécifique node in the input/output tree. (#1570/#1571)
 - Translation files are now dynamically detected. (#1589)
 - Bug fixed
 - Icon selection for temperature is not more allowed. (#1286)
 - Frost and Away temperature are now correctly imported. (#1426)
 - Values specified in a BETWEEN condition are now tested before saving the condition. (#1434)
 - The mode a of DIN10V02 (analog/temperature) can't now be changed while input is used in a link. (#1437)
 - Overall tab was expanding forever under MacOS (#1446)
 - Links between DMX groups and clocks are now handled. (#1454)
 - The dialog to add station can now correctly control the DAMPL01. (#1473)
 - No more spurious DALI slaves in DALI groups after a commissioning with substitution. (#1514)
 - No more crash when a color cycle link is created with a DMX group. (#1531)
 - It is now possible to create links with variables on a DIN10V02 input. (#1539)
 - Dimmer value and Dimmer value/Off are now correct for links with variables or DALI outputs. (#1540/#1574)
 - Variables are now handled in atmospheres. (#1541)
 - House tree is now updated after the rename of a room/floor. (#1542/#1555)
 - Items are now selected after a renaming. (#1543)
 - DINTDALI01 interface can now be renamed using F2 key shortcut. (#1544)
 - When a text of a text link (DRS2320x) is modified, the text of the link itself is updated. (#1545)
 - Links with DALI groups are now handled. (#1551)
 - Group, atmosphere and clock can now be renamed using contextual menu. (#1554)
 - Groups in conditions are now handled. (#1558)
 - On change event is now disabled for shutters. (#1566)
 - Negative temperatures are now displayed in PC active mode. (#1567)
 - Links between variables and text are now saved in DAP file. (#1569)
 - Temporized link with DALI output are now handled. (#1573)
 - No more crash when a link is created on a DETH02. (#1575)
 - Dimmer value of a DALI output are now correctly imported in the scene. (#1576)
 - Height of rows in edition dialog of scenes is now adjusted to their content. (#1577)

- When a new DAP file is sent to the Master, click on input does not execute link. (#1578)
- Axis of hours of temperature logs are now multiple of 15 minutes. (#1580)
- Last used communication port was not correctly selected. (#1581)
- No more crash when a link is done between a DGSM01 output and a DRS23201 input. (#1584)
- Initialization of Master does not crash anymore if application has a long name. (#1585)
- If the update of the DGQG01 OS freezes, an error is now displayed. (#1587)
- Translations are now correctly loaded. (#1588)
- Module are not correctly marked as away after a short diagnostic. (#1590)
- Limitations
 - Some languages are not yet available in translations. Contact us at support@domintell.com.
 - First generation of database of images can be slow on some systems.
 - Temperature links are no more handled.
- Known bugs
 - Some images are missing in icon selection dialog. (#1317)
 - Unable to change icon of temperature sensor inputs. (#1286)
 - DGSM01 : status panel may not be shown. (#1336)
 - Connection to a DETH03 may fail under Windows or MacOS (#1364)
 - Connection to a DNET01 may fail under Windows 10 (release 1803) (#1594)
- Not yet supported modules
 - DPULS01
- Version 1.8.2beta
 - New features
 - Handling of update files has been improved. (#1408)
 - Write/read application icon are now separated from other icons in toolbar and menu. (#1412)
 - Condition form has been improved (icon displayed, ...). (#1427)
 - Day/Night system variable is now shown in main windows. (#1442)
 - Selection and drap-and-drop are now disabled for nodes that can not be moved. (#1450)
 - Disable multiple selection in the rooms/floors tree and inputs tree. (#1451)
 - Context menu has been improved when several outputs are selected. (#1452)
 - When PC active mode is enable CTRL (CMD on MacOS) must be hold while clicking on an input/output to execute the action. (#1468)
 - A help message is displayed at first opening or when PC active mode is toggled. (#1496, #1497)
 - Add keyboard shortcut in module handling dialog. (#1522)
 - Profile edition dialog has been improved (range highlighted when value is table clicked). (#1528)
 - Bug fixed
 - Status was not shown for DIN10V02 in PC active. (#1411)
 - Conditions were not displayed when hover by cursor. (#1413)
 - Conditions with DIN10V02 were not handled. (#1414)
 - Table containing profile temperature was not displayed. (#1423)
 - DIN10V02: Parameters of the module were not correctly displayed. (#1428)
 - DIN10V02: Unable to display temperatures' profiles for this module. (#1429)
 - DIN10V02: The name of the input was not correctly imported from a DAP file in a previous version. (#1430)
 - Crash when links on a DIN10V02 module were edited. (#1431)

- DIN10V02: Temperature mode of the module was not fully implemented. (#1432)
- DIN10V02: Physical values with floating point numbers were not correctly handled. (#1433)
- Conditions with DINTDALI01 were not handled. (#1436)
- Automatic followers were not generated for the "Presence simulation" system variable. (#1438)
- Enabling of Presence simulation was not possible. (#1439)
- Conditions on atmospheres were not handled. (#1440)
- System variables were not handled in conditions. (#1443)
- LightProtocol (Smart application): variables were shifted by one position. (#1444)
- Configuration of the Daylight Saving Time (DST) was not correctly imported. (#1445)
- DIN10V02: Name of the input was display as "0" in temeprature log form. (#1448)
- Name of the scenes was not converted to UTF-8. (#1453)
- Unable to create DALI groups. (#1455)
- System variables were not handled for some type of links. (#1458)
- Links of type Io on Io were not always correctly saved. (#1459)
- Some actions did not set the DAP file as modified. (#1460, #1486)
- System variables were not updated in PC active mode. (#1461)
- Temperature axis was not suitable for the displayed profile. (#1462)
- Tabs were shrink instead of showing scroll buttons. (#1465)
- Station control dialog crashed in PC active mode. (#1466)
- Status of conditions ware not updated in PC active mode. (#1471)
- Old Domintell2 configuration software was removed when GoldenGate was installed. (#1474)
- Spurious links were created when a DAP file from 1.27.07 was saved. (#1475)
- Strange behavior when saving of a DAP file was canceled. (#1477)
- "Save on SD card" option was missing. (#1478)
- DTSC0x: temperature sensors and clocks were displayed several times. (#1480)
- Some items were not refreshed after rename. (#1482)
- Trees were not updated when items moved from floors/rooms. (#1483)
- Temperature sensors can not be moved in floors/rooms. (#1484)
- Unable to move back an item to the house 'main floor'. (#1485)
- Dialog was sometimes immediately closed when application was sent. (#1487)
- Toolbar: Key shortcuts were not displayed in tooltip. (#1488)
- DIN10V02: Input name was lost when mode was changed. (#1491)
- Unable to create link with DIREMIT01. (#1492)
- Actions on scenes were not executed in PC active mode. (#1493)
- Execution of links ware working in PC active mode. (#1494)
- DMX were not handled in atmospheres. (#1502)
- Groups were not handled in on-change events. (#1505)
- DINTDALI01: Unable to display the dialog to manage slaves. (#1510)
- DINTDALI01: The state of the checkbox "Remember last value" was random. (#1511)
- Modification of handling of short/long push was saved while editing of link was canceled. (#1521)
- It was not possible to manually replace a module in the module handling dialog. (#1523)
- On-change events between variables were not handled. (#1525)
- On-change events with atmospheres were not handled. (#1526)

- On-change events with temperature zones were not handled. (#1527)
- Temperature profiles are not correctly copied to other sensors. (#1530)
- Type of push was not displayed for links involving temperature zones. (#1533)
- Unable to erase DGQG01 memory sometimes when application was sent. (#1534)
- Limitations
 - Some languages are not yet available in translations. Contact us at support@domintell.com.
 - First generation of database of images can be slow on some systems.
 - Temperature links are no more handled.
- Known bugs
 - Some images are missing in icon selection dialog. (#1317)
 - Unable to change icon of temperature sensor inputs. (#1286)
 - DGSM01 : status panel may not be shown. (#1336)
 - Connection to a DETH03 may fail under Windows or MacOS (#1364)
 - Overall tab expands forever under MacOS (#1446)
- Not yet supported modules
 - DPULS01
- Version 1.7.0beta
 - New features
 - DGSM01 form: PIN and phone numbers can be entered more easily. (#1322)
 - Groups/Ambiances form has been improved : LED indicators moved in a separate tabs; icons added to tab header. (#1405)
 - GSM contacts can now be easily accessed from Project menu or via context menu on DGSM01 input/output. (#1406)
 - Overview guide is now accessible through Help menu. (#1362)
 - Bug fixed
 - Temperature zones form didn't have the same look/behaviour than other forms. (#1256 & #1257)
 - Search results were closed when a modification was done in one of three columns. (#1324)
 - The application name in the header of DAP file was never updated when a new filename was set. (#1355)
 - String links on text input/output (DRS23202, DRS23201, DETH02) are not executed. (#1403)
 - Limitations
 - Some languages are not yet available in translations. Contact us at support@domintell.com.
 - First generation of database of images can be slow on some systems.
 - Temperature links are no more handled.
 - Known bugs
 - Some images are missing in icon selection dialog. (#1317)
 - Unable to change icon of temperature sensor inputs. (#1286)
 - DGSM01 : status panel may not be shown. (#1336)
 - Connection to a DETH03 may fail under Windows or MacOS
 - Not yet supported modules
 - DPULS01
- Version 1.6.1beta
 - New features
 - A portable package is available for Linux (64-bit). (#1366)
 - Number of present/away/new modules is now show in modules' handling dialog. (#1361)
 - Time of DGQG01 is now displayed in diagnostic dialog and turns red if shifted of

- more than 10 minutes. (#1319)
- All firmware files has been moved into the same and new firmware directory. (#1363)
- Dialog to send application to the Master has been improved. (#1386)
- Bug fixed
 - DGQG01 : Setpoints of temperature sensors were not reset to their profile values if temperature mode is set to automatic (while automatic was already the active mode). (#1400)
 - DPBRLCD02 : it was possible to reduce number of buttons while removed buttons have links. (#1296)
 - DPRBLCD02 : transparency was not correctly handled in flat mode. (#1354)
 - Misleading software name used. Only keep GoldenGate (#1365)
 - No warning if version of OS in Master does not match the version of the application being sent (#1368)
 - Crash can occur when firmware of modules is updated. (#1369)
 - Version of DGQG01 is not updated after its update. (#1375)
 - No warning prompt when the user enters a filename that already exists. (#1376)
 - Name of input/output of DRS23201 were not correctly imported from old DAP file. (#1381)
 - Wrong icon was displayed for links between variables and texts. (#1382)
 - Links between spheres and texts were not handled. (#1383)
 - No visual activity when master was resetting after sending of application. (#1384)
 - Dialog was closed while there were errors during sending of application. (#1385)
 - Text was not correctly set for links on DRS23202. (#1391)
 - Wrong icon was highlight for DPBLCD01/02 in PC active mode. (#1392)
 - Sound groups were not correctly handled in some links. (#1397)
 - Dimmer value box was displayed for timer function on mixed/classic group. (#1398)
 - Character encoding was not correctly imported from old DAP file. (#1399)
- Limitations
 - Some languages are not yet available in translations. Contact us at support@domintell.com.
 - First generation of database of images can be slow on some systems.
 - Temperature links are no more handled.
- Known bugs
 - Some images are missing in icon selection dialog. (#1317)
 - Unable to change icon of temperature sensor inputs. (#1286)
 - Search results are closed when a modification is done is one of three columns. (#1324)
 - DGSM01 : status panel may not be shown. (#1336)
 - Application name is not updated when application is saved as another filename. (#1355)
 - Connection to a DETH03 may fail under Windows or MacOS
- Not yet supported modules
 - DPULS01
- Version 1.6.0beta
 - New features
 - Modules can be updated separately. (#1330)
 - Bug fixed
 - DPBRLCD02 : it was possible to modify transparency while flat mode was selected. (#1353)
 - Links of DDMX01 on DGSM01 input are not handled. (#1337)

- Limitations
 - Some languages are not yet available in translations. Contact us at support@domintell.com.
 - First generation of database of images can be slow on some systems.
 - Temperature links are no more handled.
- Known bugs
 - Some images are missing in icon selection dialog. (#1317)
 - Unable to change icon of temperature sensor inputs. (#1286)
 - DPBRLCD02 : it is possible to reduce number of buttons while removed buttons have links. (#1296)
 - Search results are closed when a modification is done is one of three columns. (#1324)
 - DGSM01 : status panel may not be shown. (#1336)
 - Application name is not updated when application is saved as another filename. (#1355)
 - Connection to a DETH03 may fail under Windows or MacOS
- Not yet supported modules
 - DPULS01
- Version 1.5.0beta
 - New features
 - PC active mode is enabled back after sending of application. (#1342)
 - IP address fields of Ethernet module have been reviewed. (#1321)
 - Bug fixed
 - First link of the DAP file was executed when undefined text was received via DETH02 module. (#1357)
 - DDMX01 may have unexpected behaviour if less than 8 slaves were declared. (#1358, #1334)
 - DTSC04/DVIP01/DVIP02 : video connection are now fully working. (#1287)
 - Analog links on DIN10V02 were not working. (#1284)
 - Links on GSM input (receive SMS) were not executed. (#1302)
 - Broadcast option was missing for DINTDALI01 links. (#1310)
 - OS of DTSC02/DTSC04/DVIP01/DVIP02 can now be updated. (#1325)
 - DAP file in DTSC02/DTSC04/DVIP01/DVIP02 is now correctly updated. (#1335, #1347)
 - Floor and room information were not correctly saved for some modules (DDMX01, DINTDALI01, ...). (#1315)
 - Default image of some inputs/outputs was not the good one. (#1316, #1318)
 - IP address in DVIP01/DVIP02 form was editable while DHCP was enabled. (#1320)
 - DVIP01/DVIP02 display may stay on "App. update OK" after an update of the application. (#1326)
 - No progression when update of OS of some module was done. (#1327)
 - Application crashed when a module used in followers was deleted. (#1332)
 - Variables were missing in groups/memos. (#1333)
 - It was possible to remove a variable while it was used in periodic events. (#1338)
 - LED of DMOV01/DMOV02/DMOV05 stayed always off.
 - Icon of pushed DPBL04 in PC active mode was not the good one. (#1341)
 - PC active mode stayed enabled while application in Master had been removed. (#1343)
 - Newly created variable was defaulted to true by default. (#1344)
 - Periodic events and clocks were not always executed. (#1345)
 - Conditions on periodic events are ignored. (#1346)

- Link to set a value variable to 0 does not set variable to 100 anymore. (#1349)
- Leds of DPBL0x (Lithoss) push buttons were always off. (#1350)
- Sunrise and sunset time were shifted by one hour in winter. (#1351)
- Limitations
 - Some languages are not yet available in translations. Contact us at support@domintell.com.
 - First generation of database of images can be slow on some systems.
 - Temperature links are no more handled.
- Known bugs
 - Some images are missing in icon selection dialog. (#1317)
 - Unable to change icon of temperature sensor inputs. (#1286)
 - DPBRLCD02 : it is possible to reduce number of buttons while removed buttons have links. (#1296)
 - Search results are closed when a modification is done is one of three columns. (#1324)
 - DGSM01 : status panel may not be shown. (#1336)
 - Application name is not updated when application is saved as another filename. (#1355)
- Not yet supported modules
 - DPULS01
- Version 1.4.0beta
 - New features
 - Handling of DNET01.
 - Bug fixed
 - Feedback of DGQG01 flash is now working.
 - Backlight of all push buttons are now correctly handled.
 - Default image of some IOs (DMR01, DPBRLCD02 Temperature sensor, ...) were not the good one.
 - Menu in DTSC02/DTSC04 are now correctly filled and navigation is working.
 - Icon of Outputs in regulation link are now updated in PC active mode.
 - Backlight of some pushbuttons were not correctly handled in parameter form.
 - Variable were not updated in PC active mode.
 - Automatic followers were not generated for DPBL0x and DPBR0x.
 - DAP file were not marked as modified when icons were changed.
 - Crash occurred when house layout of DTSC02/DTSC04 is modified twice.
 - Sending of application :
 - icons in the dialog were not correctly updated;
 - missing modules were not correctly handled;
 - images were not always sent when some DPBLCD01/DPBLCD02/DPBRLCD02 were missing.
 - big application were not correctly sent.
 - Analog functions were not handled (DIN10V02).
 - Since v1.2.0, groups were no more shown in search's results.
 - When a module was manually added with a valid serial number, it was still marked as virtual after a bus scan while module was connected to bus.
 - It was no possible to erase application in the DGQG01.
 - Random values was shown when a new scene was created.
 - DDMX01 links were not correctly generated.
 - DINTDALI01 slaves were not correctly saved.
 - It was unable to create DMX or DALI groups.
 - Limitations
 - DTSC04/DVIP01/DVIP02 : video connection is not yet fully working.
 - Translations are not yet available.

- Temperature links are no more handled.
- Known bugs
 - Some default images are not available or correctly set for some items (rooms, floors, clocks, ...)
- Not yet supported modules
 - DPULS01
- Version 1.3.0beta
 - Bug fixed
 - System's language is now used when GoldenGate is used for the first time.
 - Mac OS X installer was not certified by Domintell
 - Software could crash if opened DAP (from 1.27.07) was corrupted.
 - House's name is sometimes empty when DAP from 1.27.07 was opened
 - DPBRLCD02/DPBTLCD0x dialog has been clean-up and improved (especially when special menu are selected)
 - Limitations
 - DTSC02/DTSC04/DVIP01/DVIP02 are not yet fully handled (No O.S. provided for now).
 - Translations are not yet available.
 - Feedback of DGQG01 flash is not working. Just wait until dialog said it is finished (max 15min). In the meantime, DGQG01 will display the time but flashing is running.
 - Backlight of all push buttons are not correctly handled for now.
 - Temperature links are no more handled.
 - Not yet supported modules
 - DPULS01
- Version 1.2.0beta
 - New features
 - PC Active mode has been reviewed for a faster refresh.
 - It is now possible to exchange module of different type (i.e. DBIR01 with a DMR01).
 - French and Spanish translations are available.
 - Color of wires for DISM0x and DNKPB0x is displayed in configuration dialog.
 - Group for followers has been moved to a specific node in the tree.
 - Bug fixed
 - Several bugs in DPBRLCD02 and DPBLCD0x configuration dialog has been fixed : special menu, version specific features, custom screensaver.
 - A freshly opened application was marked as modified.
 - Regulation link were not executed.
 - Use a new naming conversion for application directory.
 - Modification in regulation link and temperature profiles did not enable the save button.
 - Temperature zone in tree is not refreshed after a modification.
 - In module management, some modifications are applied while cancel button is pressed.
 - When a searched group is deleted, the application crash.
 - Group for followers were editable.
 - Limitations
 - DTSC02/DTSC04/DVIP01/DVIP02 are not yet fully handled (No O.S. provided for now).
 - Translations are not yet available.
 - Feedback of DGQG01 flash is not working. Just wait until dialog said it is finished (max 15min). In the meantime, DGQG01 will display the time but flashing is running.

- Backlight of all push buttons are not correctly handled for now.
- Temperature links are no more handled.
- Not yet supported modules
 - DPULS01
- Version 1.1.0beta
 - New features
 - Only DAP files saved with Domintell2 1.27.06 or later can be opened. DAP files from previous GoldenGate beta versions may not open.
 - Diagnostic in system status dialog has been implemented.
 - In PC active mode, value of dimmer outputs is also displayed.
 - Search feature has been improved :
 - results sorted (empty nodes placed below);
 - house location shown;
 - ambiances shown;
 - search in OnChange event, temperature link, followers, conditions;
 - running a search in a already searched item, will update the existing search tab;
 - ...
 - Flash of new firmwares to updatable modules is now available.
 - Use new Domintell logo in splash screen and setup.
 - Add new keyboard shortcuts to have consistent behaviour between all windows/dialogs.
 - Amélioration de la lecture des logs de simulation.
 - Bug fixed
 - Texts are not correctly converted to UTF-8 under Windows.
 - Serial numbers are not shown in links.
 - Temperature are not show in PC active mode.
 - Combobox with available ports is too small under Windows.
 - It is now possible to change the order of links inside a clock.
 - Contextual menu is not correctly shown in pane with floors/rooms.
 - It is not possible to add a condition on a new regulation link.
 - It is not possible to move a temperature zone in a floor/room.
 - Automatic followers are not generated for DPBRLCD02 and DPBTLCD0x.
 - Program crashes when removing of a module is cancelled.
 - It is not possible to delete clock, periodic event, link on periodic event, OnChange event
 - Temperatur zone can not be used to create a regulation link.
 - Some text links are not possible.
 - Used memos can be deleted.
 - Module used in regulation link can be deleted.
 - Icons are missing in some contextual menus.
 - Followers can not be deleted via contextual menu.
 - Description of followers are incomplete.
 - "Timer" command is not correctly shown in description of links.
 - "Timer" command is not correctly handled for dimmer output.
 - Editing dialog of a timer link is not correctly filled.
 - Value of PC active are now displayed at the end of the description.
 - It is now possible to edit DRS23201 parameters from output column.
 - It is now mandatory to enter a 4-digit number for the access code in the DTSC02/04 parameters.
 - Modifications on newly opened (and converted) DAP file are not detected.
 - Fix some application crashes.
 - Offset of Room/Floor is ignored in house layout.

- Links on DMOV01 or infra-red receiver are forced to end of push.
- Links of an input may be not correctly sorted.
- Description of a link is cropped instead of showing horizontal scrollbar.
- Invalid date (ie 31/02/2017) can be selected when a clock is configured.
- Status (measured temperature) of temperature sensor is not shown.
- Colors of DPBRLCD02 are not correctly initialized if module is not edited at least once.
- Limitations
 - DTSC02/DTSC04/DVIP01/DVIP02 are not yet fully handled (No O.S. provided for now).
 - Special menus in DPBLCD0x and DPBRLCD02 are not yet working.
 - Translations are not yet available.
 - PC active will works slowly on big installation and action on inputs are not available.
 - Astronomical clocks are not fully intergated.
 - Temperature links are no more handled.
- Not yet supported modules
 - DPULS01
- Version 1.0.2beta
 - New features
 - Setup package has been improved for Windows and Mac OS.
 - It is now possible to open a dap file by clicking directly on it or dropping it in main window of GoldenGate (Windows and Mac OS only).
 - Columns in main window can be resized.
 - Bug fixed
 - Texts are not correctly converted to UTF-8.
 - Serial numbers are not shown in links.
 - Description of followers are incomplete.
 - "Timer" command is not correctly shown in description of links.
 - "Timer" command is not correctly handled for dimmer output.
 - Editing dialog of a timer link is not correctly filled.
 - Value of PC active are now displayed at the end of the description.
 - It is now possible to edit DRS23201 parameters from output column.
 - It is now mandatory to enter a 4-digit number for the access code in the DTSC02/04 parameters.
 - Modifications on newly opened (and converted) DAP file are not detected.
 - Fix some application crashes.
 - Offset of Room/Floor is ignored in house layout.
 - Links on DMOV01 or infra-red receiver are forced to end of push.
 - Links of an input may be not correctly sorted.
 - Description of a link is cropped instead of showing horizontal scrollbar.
 - Invalid date (ie 31/02/2017) can be selected when a clock is configured.
 - Not yet supported modules
 - DPULS01