

Domintell GoldenGate

Configuration software for Domintell2 system

v10.0.0

Loading interface (1.2.0 - f0352a89)...



Table of Contents

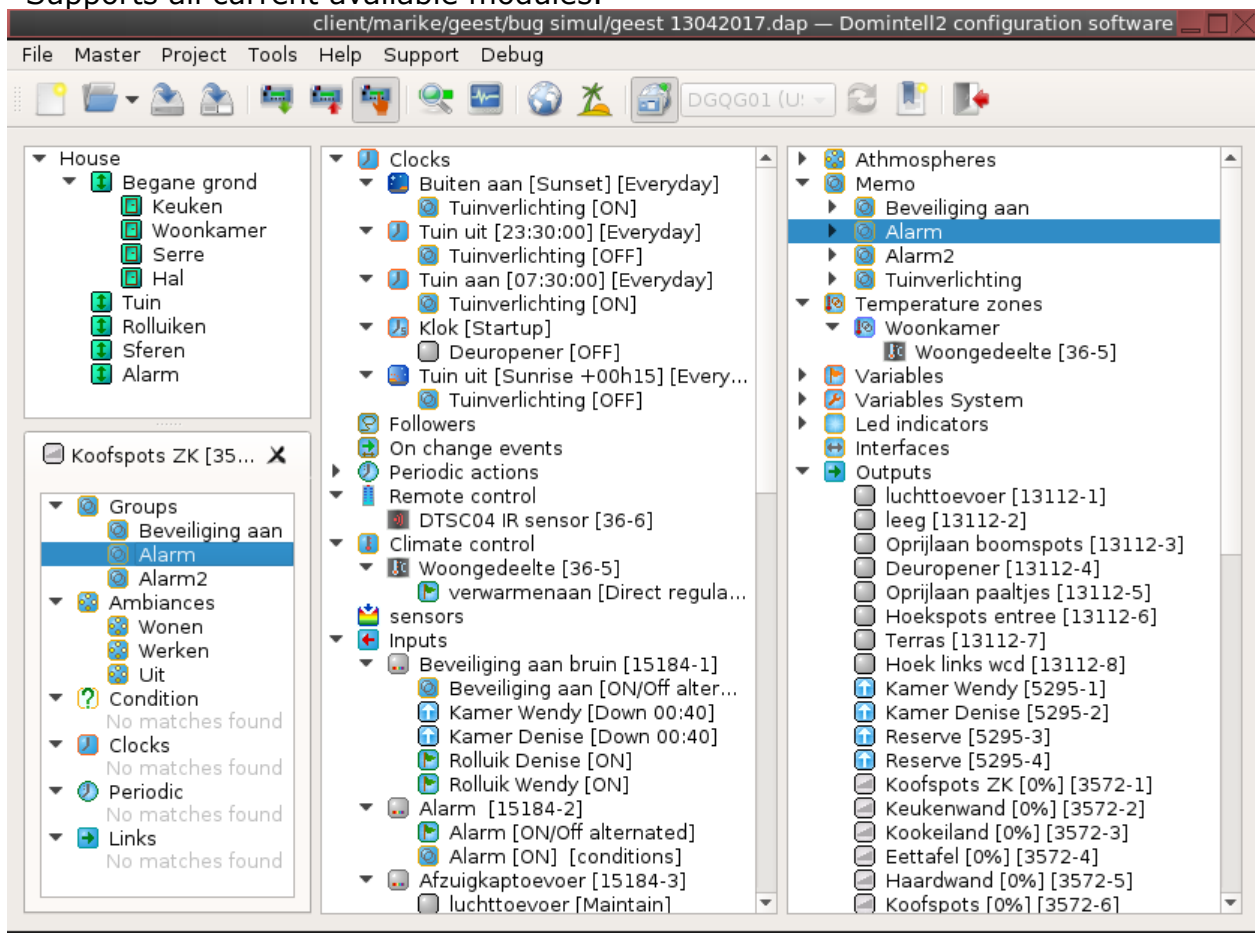
Introduction.....	3
New features.....	3
Shortcuts.....	8
Limitations/Known issues.....	9
Report bugs.....	9
What must be tested.....	10

Illustration Index

Illustration 1: Main toolbar when not connected to the Master/DGQG.....	3
Illustration 2: Main toolbar when conncted to the Master/DGQG and "PC active" mode enabled.....	4
Illustration 3: New search window.....	4
Illustration 4: Special context menu on multiple selection.....	4
Illustration 5: Diagnostic and firmware winodw.....	5
Illustration 6: Restore on power failure and simulation.....	6
Illustration 7: Transform dialog.....	7
Illustration 8: Simulation log window.....	7
Illustration 9: Temperature log window.....	8
Illustration 10: The temperature links are no more handled.....	9
Illustration 11: Regulation links are still handled.....	9

Introduction

- Brand new software, modern, up-to-date and from a technology point of view ready for the next 15 years to come.
- Facilitates fast and swift integration of new modules and new features
- BUT ensures a similar look and feel compared to the first generation software → no learning curve needed!
- Supports all current available modules.



New features

- **If the database of images was generated with a version earlier to 1.13.0, the database SHOULD be regenerated (See support menu) !**
- **Branch 3.x (and later) of GoldenGate is no more compatible with DGQG01 and can not connect anymore to a DNET01. Please use branch 1.x of GoldenGate to use it with a DGQG01 !**
- The user interface has a better intergration with the operating system (same look-and-feel).
- Menus have been reviewed and simplified.
- A toolbar has been added with the main functions.



Illustration 1: Main toolbar when not connected to the Master/DGQG

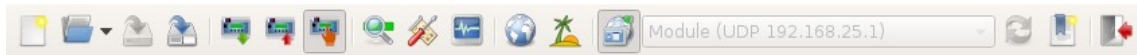


Illustration 2: Main toolbar when conncted to the Master/DGQG and "PC active" mode enabled

- Keyboard shortcut has been implemented. You can send us yours for a future implementation. See Shortcuts paragraph
- Search dialog is now intergrated to main window and several search can be executed via a tab system.

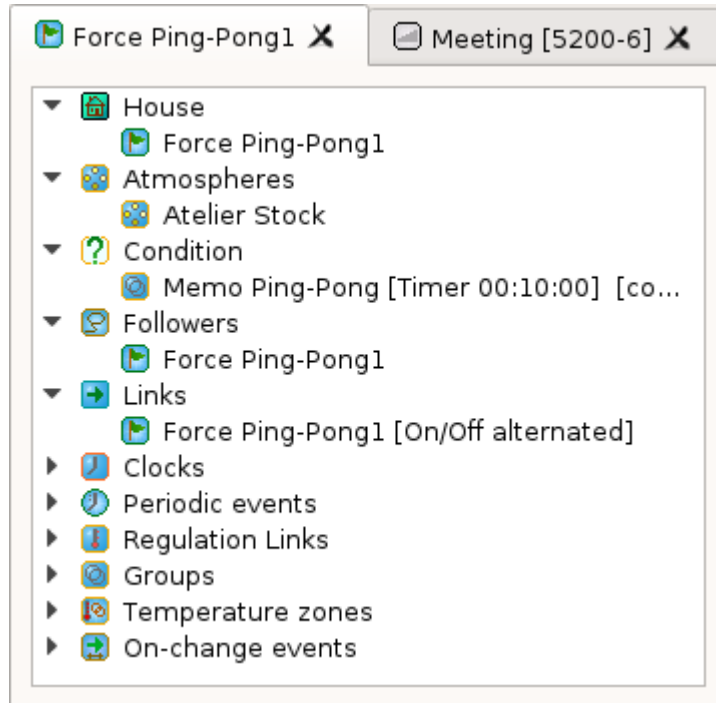


Illustration 3: New search window

- It is possible change the order of links inside a node using a drag-and-drop.
- When several items are selected, a right-click open a special context menu to create a group with selected items. This only works with items selected within "Outputs", "LED indicators" and "Interfaces" nodes.

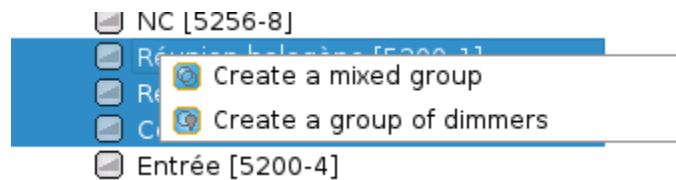


Illustration 4: Special context menu on multiple selection

- In PC active mode, CTRL (or CMD on Mac OS) key must be kept pressed while clicking on an input/ouput to execute action.
- In PC active mode, long-push are now handled on input to fully simulate start of short push, end of short push, start of long push and end of long push on inputs.
- How-to dialog box are available via Help menu.

- All updates (DGQG, firmware of modules via bus or Ethernet) are now done within the same dialog.

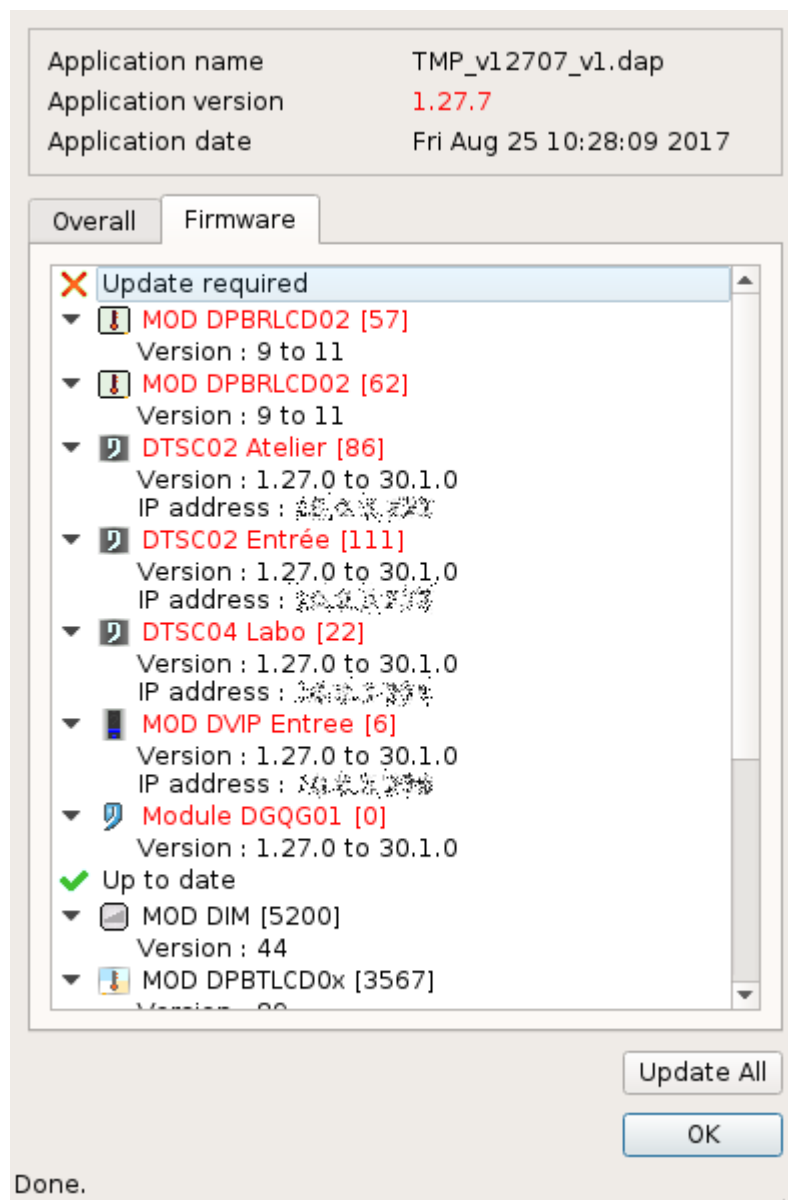


Illustration 5: Diagnostic and firmware window

- Configuration of "Restore on power failure" and "Presence simulation" have been merged in one dialog.

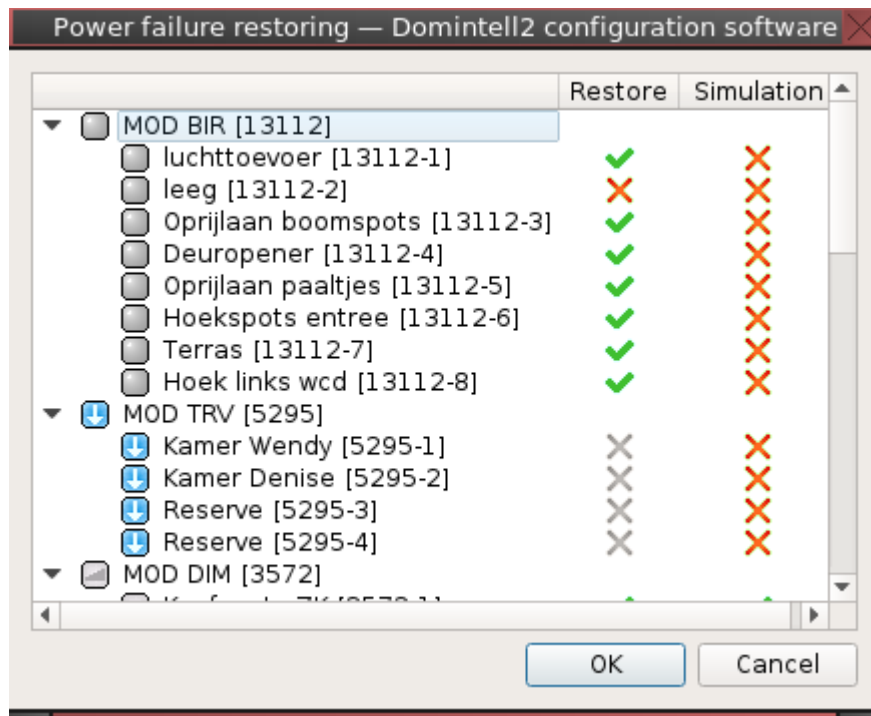


Illustration 6: Restore on power failure and simulation

- It is possible to exchange a module with an other compatible module (with different type of module). For example, you can transform :
 - two DISM08 and on DISM04 into a DISM20;
 - one DTSC04 by a DTSC02 (or vice-versa)
 - a DBIR01 into a DMR01 (or vice-verse)

In the example below, a group of two DMR01 and two DBIR01 will be merge and moved to an unused DBIR01. As only 5 IOs are used for these four modules, all unused Ios are ignored. This allows moving these 5 Ios from four different modules to a single DBIR01.

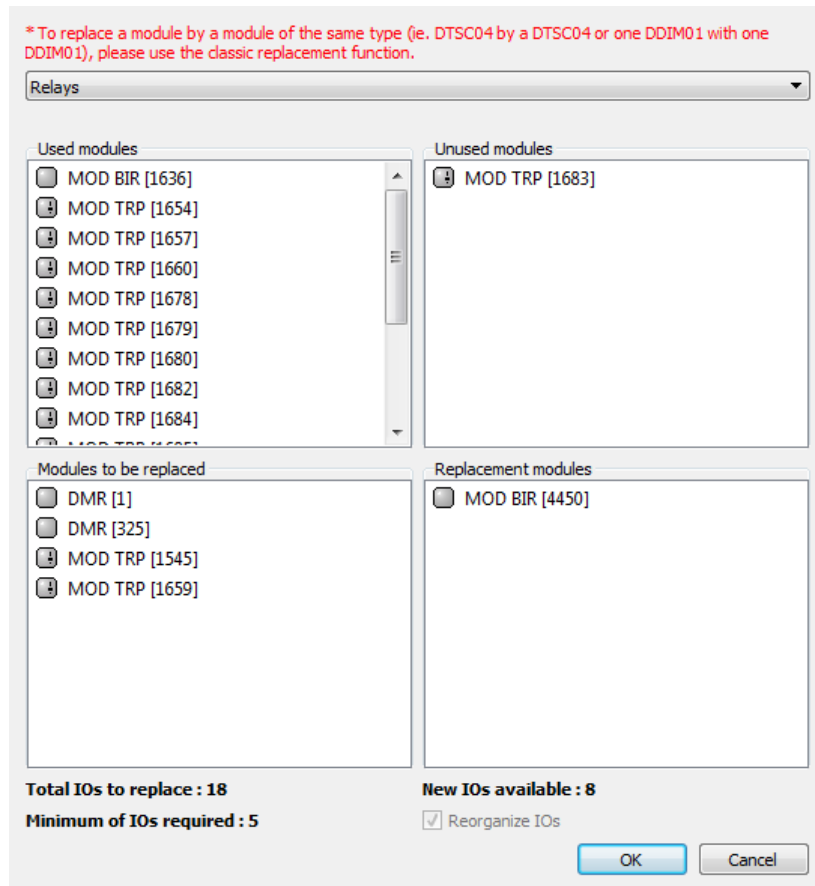


Illustration 7: Transform dialog

- Simulation log viewer has been reviewed and simulation data can be saved.

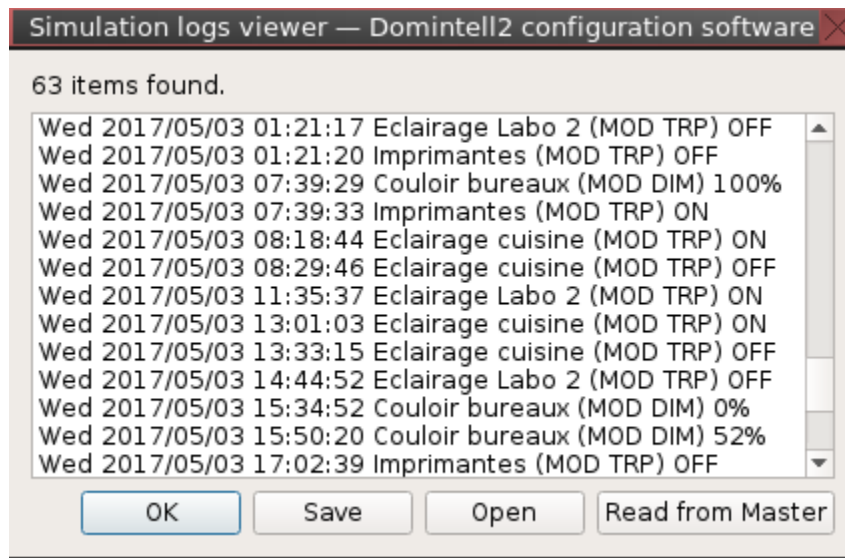


Illustration 8: Simulation log window

- Temperature log from last 24h can be read from DGQG01 and showed in graphic.

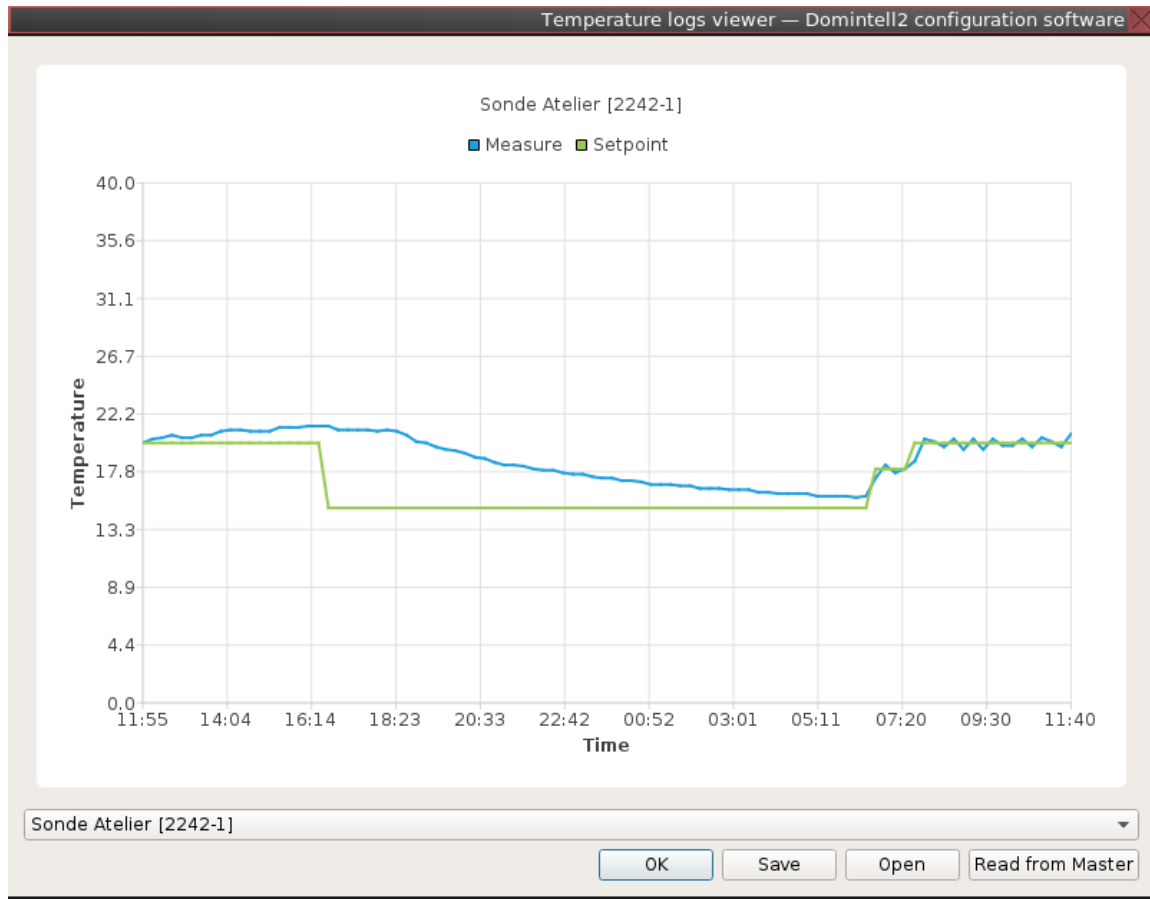


Illustration 9: Temperature log window

Shortcuts

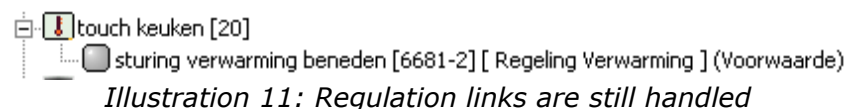
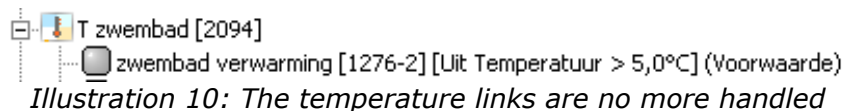
Some shortcuts may vary on depending on the platform.

- Main window
 - CTRL+N | CTRL+W : New empty application.
 - CTRL+S : Save application.
 - CTRL+SHIFT+S : Save application to a new filename.
 - CTRL+F : Search where the selected item is used.
 - CTRL+SHIFT+F : Search where all associated items of a module are used.
 - CTRL+Q : Quit GoldeGate.
 - CTRL+C : Copy text of currently selected item in main window to system clipboard. If tooltip is displayed, text in tooltip will also be copied. If a link is selected, the associated data will be copied in GoldenGate clipboard.
 - CTRL+V : If a link has been previously copied a new link will be paste/created on the currently selected input.
 - ALT+RETURN : Show edit/parameter dialog of the selected item.
 - ALT+SHIFT+F and ALT+F : Unfold and fold all nodes in room, input and output panes.
 - F1 : Show "About" dialog with version of all modules. informations about application and OS in Master has been moved to the "Update and Diagnosis" dialog.
 - Hidden text "debugon" : enable debug mode of Master.
 - Hidden text "debugoff" : disable debug mode of Master.
 - Hidden text "support" : **not working anymore**.
 - F2 : Rename the selected item.
 - F6 : Show "Update and Diagnosis" dialog. Also contains information about

- application and OS in the Master.
- CTRL+click : in PC Active mode, this allow to toggle outputs/variables/memo/scene or execute links from inputs.
- Groups, zones and ambiances creation dialog
 - Delete or ALT+Right in left pane : remove the selected item from the group or the ambiance.
 - Insert or ALT+Left in right pane : add selected item to the group or the ambiance.
- Modules handling dialog
 - Delete or ALT+Right in left pane : remove the selected item from the group or the ambiance.
 - Insert or ALT+Left in right pane : add selected item to the group or the ambiance.

Limitations/Known issues

- **Always contact support before upgrading an older installation (1.27 or earlier) to GoldenGate.**
- **If the database of images was generated with a version earlier to 1.13.0, the database SHOULD be regenerated (See support menu) !**
- Software is only in English, French, Dutch and Spanish for now. Package to translate in other languages is available at <http://pro.mydomintell.com/share/soft-goldengate/translations/>.
- The following modules **are no more supported**. They will be automatically removed from the application.
 - DETH04
 - DETH07
 - DCF01
 - DCOMINT01
 - DGRAPH
 - DUSB01
 - DRS23203
 - DLCD01
 - DLCD02
 - DLCD03
 - DTSC01
 - DTSC03
- The following modules are not yet supported. They will be available as soon as possible.
 - DPULS01
 - DIREMIT01
- Temperature links (higher than, lower than) are no more handled. Regulation links (proportional, direct) are still handled.



Report bugs

If a bug run on your screen, send us a printscreen, the procedure to reproduce the bug, the DAP file, the log file.

- My Documents->Domintell2->Log :

- the latest goldengate-log-x.log file
- the newest logfile_x.log file
- the file with your DAP filename ending by "_info.txt", if any (ie. "Dupont_v12707_v6.dap_info.txt")
- My Documents->Domintell2->V30 :
 - the DAP file (ie. "Dupont_v12704_v6.dap")

What must be tested

- When you connect via DETH03 with a password set
- Dap file conversion and saving :
 1. Open a DAP file in Domintell2 software
 2. Open a **copy** of this DAP file in GoldenGate.
 3. Verify that the name of IO, module, room, ... are correct (accent, length, ...).
 4. Verify links, conditions,...
 5. Save the dap file on a new name (Save As)
 6. Close (CTRL+W) current DAP file in GoldenGate and open your new DAP file saved at step 5.
 7. Check if everything is OK.
- When you modify one parameter in the application (add module, memo, scan bus with unscanned module, create/modify link, rename IO, ...) please check each time that a asterisk (*) appears in the tittle of the window, the icon save becomes available. Save immediately the application the be able to see if the next modification you will made enable again the save button.
- Open dap DI2 + GoldenGate check matching
- Save As this file in GoldenGate close + reopen and check if everything OK