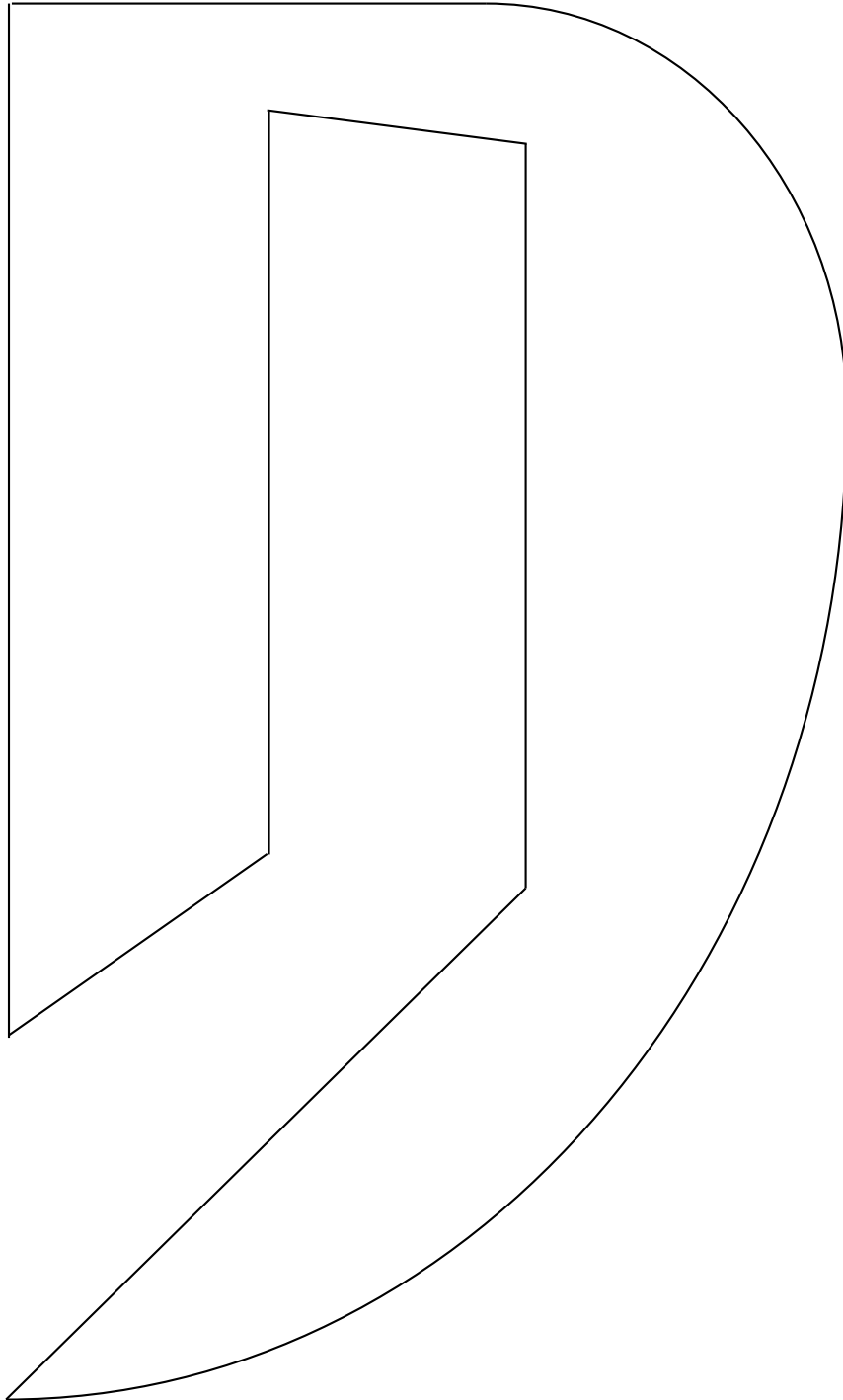


DETH07 Manual



Pronto interface

Table of Contents

Overview.....	3
Requirements.....	3
Features.....	3
Module configuration.....	4
Software manual.....	5
Go further.....	7
Troubleshooting.....	8

Overview

The Module DETH07 allows to interface the Domintell system with a Pronto TSU9600 (or TSU9800) from Philips using the 2-way communication system through the wireless interface of the Pronto. You will be able to handle output (DBIR, DTRP, DDIM, DAMPLI01, DOUT, ...), Memo and temperature sensor.

Thanks to the software provided with the DETH07, the Domintell application (DAP file) will be converted to the ProntoEdit file format (XCF) using ProntoScript language (No knowledge in ProntoScript is necessary).

!! No test has been made over the Internet network.

!! Tests have been only done with Domintell2 Application which contains West-European characters.

Requirements

- A DETH07 Module
 - A Pronto TSU9600 (or TSU9800)
 - A wired local network (for the DETH07)
 - A wireless access point (for the Pronto)
 - A minimum of knowledge about the configuration of a LAN (Domintell support will not provide any support about the configuration of the Pronto. See user manual of the Pronto and the wiring documentation of the DETH0x modules)
 - A Domintell application which contains a configured DETH07 module and outputs to control must have been placed in a Floor or a Room. All outputs that are in the default floor "House" will be ignored !
-

Features

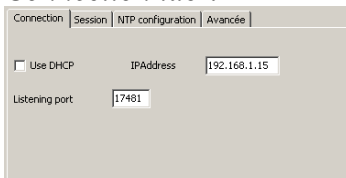
- Toggle output of : DBIR01, DLED01, DMR01, DTRP01, DTRP02, DTRV01, DTRVBT01.
- Toggle Memo and Sphere
- Name displayed on Pronto can be changed
- Advanced functionality with rotary wheel to :
 - adjust set-point and mode of a temperature sensor (DTEM01, DTEM02, DPBTLCD02, DTSC0x, DLCLD03);
 - set the value of the output of : DDIM01, DOUT10V0x;
 - set the volume and change the source of an output of a DAMPLI01.

- The Pronto doesn't display the status in real-time. They are asked at defined intervals. This allows to save the battery of the pronto and to avoid to overload the Domintell bus (When the main page of the activity "DETH07" is displayed, the wireless module of the Pronto is no more used and can go to stand-by mode).
 - Input and output which are not handle by the conversion software can be handled directly in the configuration file of the Pronto (a good knowledge in ProntoScript is needed). Automatic text are also supported (cf. DETH02 documentation "Samples of strings sent to your Domintell installation").
-

Module configuration

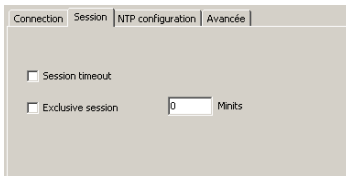
The configuration of the module is like others DETH0x modules. A complete documentation could be found on the website of Domintell (<http://www.domintell.com>). Here is a summary of main options :

- *Connection tab* :



The use of DHCP is only for experimented users.

- *Session tab* :



"Exclusive session" must be disabled due to repetitive LOGIN

sequences.

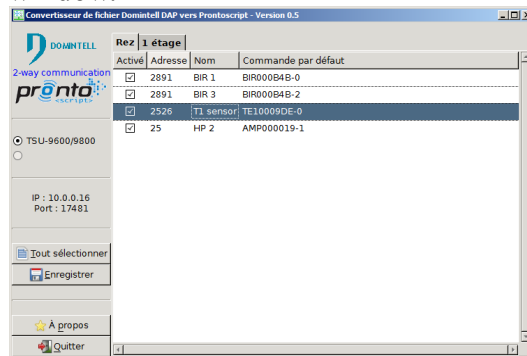
- *NTP configuration* : NTP will only update date and time of Domintell system. The Pronto time will not be affected.
 - *Advanced* : set the password to access to Domintell system with the Pronto. It will be asked later in the conversion software.
-

Software manual



!! When the conversion is done, the software is automatically closed. This is not possible to save the project. Each time the DAP file will be opened, all outputs will be checked.

1. Open the DAP file to convert (The application must contain a DETH07 module or an error will be displayed). When the file is opened, summary of DETH07 parameters (IP and port) are shown on the left-side of the window.



2. All rooms and floors that contains handled inputs and outputs are displayed. By default, all items are checked and will appear on the Pronto.
3. When selection of needed outputs is done, click on the button "Save". A ProntoEdit destination file will be suggested (by default, it will be saved in folder "My Documents").
4. Then the IP address is asked. If DETH07 have a static one, field will be automatically filled. The field will be empty and a host name or an IP should be entered.
5. If a password (cf. "Module configuration" chapter) is defined in the DETH07 module, it must be filled (the password is not stored in the DAP file). If there is not password defined, just click on "OK".
6. The conversion starts. This may take a while (from 5 to 30 seconds) depending of the number of floor/room and output to convert.
7. When done, gDap2Xcf software close itself and the new configuration ProntoEdit file is ready to be opened with ProntoEdit software. !! This configuration file must not be load "as it is" in the Pronto. A jump must be created on the main page to the first visible page in the "ETH07" activity ("House" in the example below) or you have to merge the configuration file with an existing one.



8. Some options can be changed in the hidden page "PARAMETERS" :

ETH07_IP	10.0.0.18
ETH07_PORT	17481
USE_PSW	true
PASSWORD	⤵⤴⤶⤷⤸⤹⤺⤻⤼⤽⤿⥀⥁⥂⥃⥄⥅⥆⥇⥈⥉⥊⥋⥌⥍⥎⥏⥐⥑⥒⥓⥔⥕⥖⥗⥘⥙⥚⥛⥜⥝⥞⥟⥠⥡⥢⥣⥤⥥⥦⥧⥨⥩⥪⥫⥬⥭⥮⥯⥰⥱⥲⥳⥴⥵⥶⥷⥸⥹⥺⥻⥼⥽⥾⥿⦀⦁⦂⦃⦄⦅⦆⦇⦈⦉⦊⦋⦌⦍⦎⦏⦐⦑⦒⦓⦔⦕⦖⦗⦘⦙⦚⦛⦜⦝⦞⦟⦠⦡⦢⦣⦤⦥⦦⦧⦨⦩⦪⦫⦬⦭⦮⦯⦰⦱⦲⦳⦴⦵⦶⦷⦸⦹⦺⦻⦼⦽⦾⦿⧀⧁⧂⧃⧄⧅⧆⧇⧈⧉⧊⧋⧌⧍⧎⧏⧐⧑⧒⧓⧔⧕⧖⧗⧘⧙⧚⧛⧜⧝⧞⧟⧠⧡⧢⧣⧤⧥⧦⧧⧨⧩⧪⧫⧬⧭⧮⧯⧰⧱⧲⧳⧴⧵⧶⧷⧸⧹⧺⧻⧼⧽⧾⧿⨀⨁⨂⨃⨄⨅⨆⨇⨈⨉⨊⨋⨌⨍⨎⨏⨐⨑⨒⨓⨔⨕⨖⨗⨘⨙⨚⨛⨜⨝⨞⨟⨠⨡⨢⨣⨤⨥⨦⨧⨨⨩⨪⨫⨬⨭⨮⨯⨰⨱⨲⨳⨴⨵⨶⨷⨸⨹⨺⨻⨼⨽⨾⨿⩀⩁⩂⩃⩄⩅⩆⩇⩈⩉⩊⩋⩌⩍⩎⩏⩐⩑⩒⩓⩔⩕⩖⩗⩘⩙⩚⩛⩜⩝⩞⩟⩠⩡⩢⩣⩤⩥⩦⩧⩨⩩⩪⩫⩬⩭⩮⩯⩰⩱⩲⩳⩴⩵⩶⩷⩸⩹⩺⩻⩼⩽⩾⩿⪀⪁⪂⪃⪄⪅⪆⪇⪈⪉⪊⪋⪌⪍⪎⪏⪐⪑⪒⪓⪔⪕⪖⪗⪘⪙⪚⪛⪜⪝⪞⪟⪠⪡⪢⪣⪤⪥⪦⪧⪨⪩⪪⪫⪬⪭⪮⪯⪰⪱⪲⪳⪴⪵⪶⪷⪸⪹⪺⪻⪼⪽⪾⪿⫀⫁⫂⫃⫄⫅⫆⫇⫈⫉⫊⫋⫌⫍⫎⫏⫐⫑⫒⫓⫔⫕⫖⫗⫘⫙⫚⫛⫝̸⫝⫞⫟⫠⫡⫢⫣⫤⫥⫦⫧⫨⫩⫪⫫⫬⫭⫮⫯⫰⫱⫲⫳⫴⫵⫶⫷⫸⫹⫺⫻⫼⫽⫾⫿⬀⬁⬂⬃⬄⬅⬆⬇⬈⬉⬊⬋⬌⬍⬎⬏⬐⬑⬒⬓⬔⬕⬖⬗⬘⬙⬚⬛⬜⬝⬞⬟⬠⬡⬢⬣⬤⬥⬦⬧⬨⬩⬪⬫⬬⬭⬮⬯⬰⬱⬲⬳⬴⬵⬶⬷⬸⬹⬺⬻⬼⬽⬾⬿⭀⭁⭂⭃⭄⭅⭆⭇⭈⭉⭊⭋⭌⭍⭎⭏⭐⭑⭒⭓⭔⭕⭖⭗⭘⭙⭚⭛⭜⭝⭞⭟⭠⭡⭢⭣⭤⭥⭦⭧⭨⭩⭪⭫⭬⭭⭮⭯⭰⭱⭲⭳⭴⭵⭶⭷⭸⭹⭺⭻⭼⭽⭾⭿⮀⮁⮂⮃⮄⮅⮆⮇⮈⮉⮊⮋⮌⮍⮎⮏⮐⮑⮒⮓⮔⮕⮖⮗⮘⮙⮚⮛⮜⮝⮞⮟⮠⮡⮢⮣⮤⮥⮦⮧⮨⮩⮪⮫⮬⮭⮮⮯⮰⮱⮲⮳⮴⮵⮶⮷⮸⮹⮺⮻⮼⮽⮾⮿⯀⯁⯂⯃⯄⯅⯆⯇⯈⯉⯊⯋⯌⯍⯎⯏⯐⯑⯒⯓⯔⯕⯖⯗⯘⯙⯚⯛⯜⯝⯞⯟⯠⯡⯢⯣⯤⯥⯦⯧⯨⯩⯪⯫⯬⯭⯮⯯⯰⯱⯲⯳⯴⯵⯶⯷⯸⯹⯺⯻⯼⯽⯾⯿ⰀⰁⰂⰃⰄⰅⰆⰇⰈⰉⰊⰋⰌⰍⰎⰏⰐⰑⰒⰓⰔⰕⰖⰗⰘⰙⰚⰛⰜⰝⰞⰟⰠⰡⰢⰣⰤⰥⰦⰧⰨⰩⰪⰫⰬⰭⰮⰯⰰⰱⰲⰳⰴⰵⰶⰷⰸⰹⰺⰻⰼⰽⰾⰿⱀⱁⱂⱃⱄⱅⱆⱇⱈⱉⱊⱋⱌⱍⱎⱏⱐⱑⱒⱓⱔⱕⱖⱗⱘⱙⱚⱛⱜⱝⱞⱟⱠⱡⱢⱣⱤⱥⱦⱧⱨⱩⱪⱫⱬⱭⱮⱯⱰⱱⱲⱳⱴⱵⱶⱷⱸⱹⱺⱻⱼⱽⱾⱿⲀⲁⲂⲃⲄⲅⲆⲇⲈⲉⲊⲋⲌⲍⲎⲏⲐⲑⲒⲓⲔⲕⲖⲗⲘⲙⲚⲛⲜⲝⲞⲟⲠⲡⲢⲣⲤⲥⲦⲧⲨⲩⲪⲫⲬⲭⲮⲯⲰⲱⲲⲳⲴⲵⲶⲷⲸⲹⲺⲻⲼⲽⲾⲿⳀⳁⳂⳃⳄⳅⳆⳇⳈⳉⳊⳋⳌⳍⳎⳏⳐⳑⳒⳓⳔⳕⳖⳗⳘⳙⳚⳛⳜⳝⳞⳟⳠⳡⳢⳣⳤ⳥⳦⳧⳨⳩⳪ⳫⳬⳭⳮ⳯⳰⳱Ⳳⳳ⳴⳵⳶⳷⳸⳹⳺⳻⳼⳽⳾⳿ⴀⴁⴂⴃⴄⴅⴆⴇⴈⴉⴊⴋⴌⴍⴎⴏⴐⴑⴒⴓⴔⴕⴖⴗⴘⴙⴚⴛⴜⴝⴞⴟⴠⴡⴢⴣⴤⴥ⴦ⴧ⴨⴩⴪⴫⴬ⴭ⴮⴯ⴰⴱⴲⴳⴴⴵⴶⴷⴸⴹⴺⴻⴼⴽⴾⴿⵀⵁⵂⵃⵄⵅⵆⵇⵈⵉⵊⵋⵌⵍⵎⵏⵐⵑⵒⵓⵔⵕⵖⵗⵘⵙⵚⵛⵜⵝⵞⵟⵠⵡⵢⵣⵤⵥⵦⵧ⵨⵩⵪⵫⵬⵭⵮ⵯ⵰⵱⵲⵳⵴⵵⵶⵷⵸⵹⵺⵻⵼⵽⵾⵿ⶀⶁⶂⶃⶄⶅⶆⶇⶈⶉⶊⶋⶌⶍⶎⶏⶐⶑⶒⶓⶔⶕⶖ⶗⶘⶙⶚⶛⶜⶝⶞⶟ⶠⶡⶢⶣⶤⶥⶦ⶧ⶨⶩⶪⶫⶬⶭⶮ⶯ⶰⶱⶲⶳⶴⶵⶶ⶷ⶸⶹⶺⶻⶼⶽⶾ⶿ⷀⷁⷂⷃⷄⷅⷆ⷇ⷈⷉⷊⷋⷌⷍⷎ⷏ⷐⷑⷒⷓⷔⷕⷖ⷗ⷘⷙⷚⷛⷜⷝⷞ⷟ⷠⷡⷢⷣⷤⷥⷦⷧⷨⷩⷪⷫⷬⷭⷮⷯⷰⷱⷲⷳⷴⷵⷶⷷⷸⷹⷺⷻⷼⷽⷾⷿ⸀⸁⸂⸃⸄⸅⸆⸇⸈⸉⸊⸋⸌⸍⸎⸏⸐⸑⸒⸓⸔⸕⸖⸗⸘⸙⸚⸛⸜⸝⸞⸟⸠⸡⸢⸣⸤⸥⸦⸧⸨⸩⸪⸫⸬⸭⸮ⸯ⸰⸱⸲⸳⸴⸵⸶⸷⸸⸹⸺⸻⸼⸽⸾⸿⹀⹁⹂⹃⹄⹅⹆⹇⹈⹉⹊⹋⹌⹍⹎⹏⹐⹑⹒⹓⹔⹕⹖⹗⹘⹙⹚⹛⹜⹝⹞

- *ETH07_IP : IP address of the DETH07 defined in properties of the module.
- *ETH07_PORT : Port of the DETH07 defined in properties of the module.
- *PASSWORD : String to log in to the DETH07. If a password is defined, the password is stored encrypted (weird characters will follow "LOGIN" string)
- *REFRESH_RATE : Delay before refreshing output status on the page (value under 10 (1 second) must be avoided. This may cause message overload on the Domintell bus and the installation could respond slower).
- *Back to home : If no actions are performed in a floor/room page, main page of ETH07 Activity is displayed ("House" in the above example).

9. Once the configuration file is sent to the Pronto and the DETH07 has sent status of the Domintell installation, the screen of the Pronto will look like this :



Remarks :

- Don't forget to adjust your wireless settings in the Pronto configuration.
- Some characters are not available in the Pronto (such as '°' (degree symbol)), so they must be removed in the DAP file. The virtual keyboard in ProntoEdit will show available characters.

Go further

Custom actions can be added through the "Light Protocol". It is recommended to create a new page for them because modify an existing page may corrupt it.

A socket (a session on DETH07) is only opened when an action is done on the Pronto or when status are asked to Domintell modules by the Pronto. A session (started by sending the string "LOGIN" to the DETH07) could not stay open. Once the message is sent and the answer is received, session must be closed (by sending the string "LOGOUT" and closing the TCPSocket).

It is also important to enable "Light Protocol mode" after each "LOGIN" sequence. Here is a sample code of a button to get status of a DPBU04 with serial number 373 (175 in hexadecimal).

Page code :

```
curpagetag=-1;
var eth07 = new Eth07();
eth07.init();
```

Button code :

```
var mysocket;
mysocket = new TCPSocket(true);
mysocket.connect(eth07.PARAM_IP, eth07.PARAM_PORT, 200);
mysocket.write(eth07.PARAM_PSW);
try{
    mysocket.read(32, 100); //Flush answer
}
finally {
    mysocket.write("RSMODE"); //Enable Light Protocol
}
try{
    mysocket.read(32, 100); //Flush answer
}
finally {
    mysocket.write("BU4000175%S");
}
try{
    mysocket.data = "";
    mystatus = mysocket.read(100, 1000); //Keep received data = status to handle
}
catch (e) {
}
mysocket.write("LOGOUT");
mysocket.read(32, 100); //to Avoid RST flag when close socket
mysocket.close();
delete mysocket;
```

Please refer to the DETH02 documentation to have all information about the "Light protocol" (available on the website of Domintell - <http://www.domintell.com>)

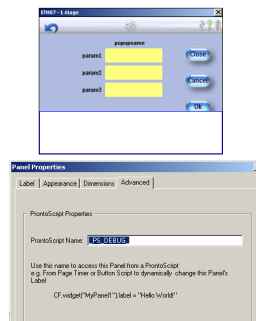
Troubleshooting

When the icons of elements in a room page are question marks :

- 1) check that the Pronto is connected to the wifi router;
- 2) check that the DETH07 has an IP address and that matches with the one shown in 'PARAMETERS' page in ProntoEditor;
- 3) check password settings if any;

If it is still not working, add a panel in the problematic page with following properties :

- * ProntoScript Name : `_PS_DEBUG_`
- * Label -> Alignement : Left and Bottom
- * Label -> Font size : 10
- * Dimension : 640x150



Once done, download configuration file in the pronto, enter in problematic room and write in an e-mail what is written in the debug area. Don't forget to join the DAP file and the XCF file to the e-mail. Send the e-mail to support.domintell@trump.be